

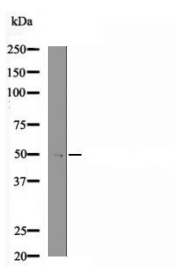
## Anti-Phospho-Rpt6 (Ser120) Polyclonal Antibody

### Product Details

Ig Type: IgG  
Reactivity: Human,Mouse,Rat  
Conjugation: Unconjugated  
Molecular Weight: Theoretical: 46 kDa.

### Applications

Verified Activity: 1. Western blot analysis Rpt6 (Phospho-Ser120) using 293 whole cell lysates.



Application: WB  
Recommended WB: 1:1000

### Properties

Stability & Storage: Store at -20°C or -80°C for 12 months. Avoid repeated freeze-thaw cycles.  
Shipping: Shipping with blue ice.

### Antigen Details

Immunogen: A synthesized phosphopeptide: human Rpt6 around the phosphorylation site of Ser120  
Antigen Species: Human  
Uniprot ID: P62195  
Synonyms: p-Rpt6 (S120);p-Rpt6 (Ser120);Rpt6 (p-S120);Rpt6 (p-Ser120)

**Inhibitor · Natural Compounds · Compound Libraries · Recombinant Proteins**

This product is for Research Use Only. Not for Human or Veterinary or Therapeutic Use

Tel:781-999-4286 E\_mail:info@targetmol.com Address:34 Washington Street,Wellesley Hills,MA 02481