

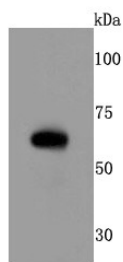
Anti-RPE65 Antibody (2D742)

Product Details

Ig Type:	IgG
Reactivity:	Human,Mouse,Rat
Conjugation:	Unconjugated
Molecular Weight:	Theoretical: 61 kDa.
Clone:	2D742
Purification:	ProA affinity purified

Applications

Verified Activity: 1. Western blot analysis of RPE65 on mouse eyeball cells lysates using anti-RPE65 antibody at 1/500 dilution.



Application:	IP,WB
Recommended	WB: 1:1000-2000; IP: 1:10-50

Properties

Stability & Storage: Store at -20°C or -80°C for 12 months. Avoid repeated freeze-thaw cycles.
Shipping: Shipping with blue ice.

Antigen Details

Immunogen:	Recombinant Protein
Uniprot ID:	Q16518

Research Background

The retinal pigment epithelium (RPE) is a monolayer simple epithelium in proximity to the outer surface of the retinal photoreceptor cells. Retinal pigment epithelium-specific protein (RPE65) is a 65kDa protein belonging to the beta-carotene dioxygenase family. This protein is important in 11-cis retinal production as well as in visual pigment regeneration. RPE65 is attached to the membrane by a lipid anchor when palmitoylated (membrane form) and soluble when unpalmitoylated. The soluble form of the protein binds vitamin A. Defects in RPE65 causes autosomal dominant retinitis pigmentosa and/or Leber congenital amaurosis type 2.

Inhibitor · Natural Compounds · Compound Libraries · Recombinant Proteins

This product is for Research Use Only. Not for Human or Veterinary or Therapeutic Use

Tel:781-999-4286 E_mail:info@targetmol.com Address:34 Washington Street,Wellesley Hills,MA 02481