

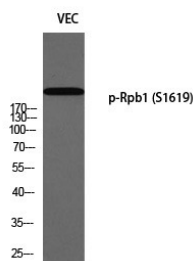
Anti-Phospho-POLR2A (Ser1619) Polyclonal Antibody

Product Details

| | |
|-------------------|---|
| Ig Type: | IgG |
| Reactivity: | Human,Mouse,Rat,Monkey |
| Conjugation: | Unconjugated |
| Molecular Weight: | Actual: 250 kDa. |
| Purification: | The antibody was affinity-purified from rabbit antiserum by affinity-chromatography using epitope-specific immunogen. |

Applications

Verified Activity: 1. Western blot analysis of VEC using p-Rpb1 (S1619) antibody.



Application: ELISA,IF,IHC,WB
 Recommended WB: 1:500-2000; IHC: 1:100-300; IF: 1:200-1000; ELISA: 1:10000

Properties

Stability & Storage: Store at -20°C or -80°C for 12 months. Avoid repeated freeze-thaw cycles.
 Shipping: Shipping with blue ice.

Antigen Details

Immunogen: A synthesized phosphopeptide: human Rpb1 around the phosphorylation site of S1619
 Antigen Species: human
 Uniprot ID: P24928
 Synonyms: DNA directed RNA polymerase II A;hRPB220;p-POLR2A (Ser1619);DNA-directed RNA polymerase II subunit RPB1;Phospho-POLR2A (S1619);RPBh1;POLRA;hsRPB1;RPB1;POLR2A (p-Ser1619);Polr2a;DNA-directed RNA polymerase II largest subunit RNA polymerase II 220 kd subunit;DNA-directed RNA polymerase III largest subunit;RpIIIS;POLR2;Polymerase (RNA) II (DNA directed) polypeptide A 220kDa;POLR2A (p-S1619);p-POLR2A (S1619);RNA polymerase II subunit B1;RPOL2;RPO2;RNA-directed RNA polymerase II subunit RPB1

Inhibitor · Natural Compounds · Compound Libraries · Recombinant Proteins

This product is for Research Use Only. Not for Human or Veterinary or Therapeutic Use

Tel:781-999-4286 E_mail:info@targetmol.com Address:34 Washington Street,Wellesley Hills,MA 02481