

## Anti-Phospho-RIPK1 (Ser166) Polyclonal Antibody

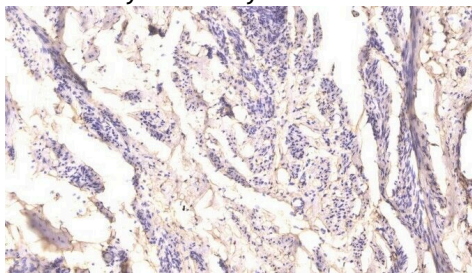
### Product Details

Ig Type:	IgG
Reactivity:	Human,Mouse,Rat
Conjugation:	Unconjugated
Molecular Weight:	Actual: 73 kDa.
Purification:	The antibody was affinity-purified from rabbit serum by affinity-chromatography using specific immunogen.

### Applications

#### Verified Activity:

1. Immunohistochemical analysis of paraffin-embedded human cervical carcinoma. Antibody was diluted at 1:200 (4°C overnight). Tris-EDTA, pH9.0 was used for antigen retrieval. Secondary antibody was diluted at 1:200 (room temperature, 45min).



Application:	IHC,WB
Recommended	WB: 1:1000-2000; IHC: 1:50-300

### Properties

Stability & Storage:	Store at -20°C or -80°C for 12 months. Avoid repeated freeze-thaw cycles.
Shipping:	Shipping with blue ice.

### Antigen Details

Immunogen:	A synthesized phosphopeptide: human RIP around the phosphorylation site of Ser166
Antigen Species:	Human
Uniprot ID:	Q13546
Synonyms:	RIPK1 (p-S166);p-RIPK1 (Ser166);RIPK1 (p-Ser166);p-RIPK1 (S166)

**Inhibitor · Natural Compounds · Compound Libraries · Recombinant Proteins**

This product is for Research Use Only. Not for Human or Veterinary or Therapeutic Use

Tel:781-999-4286 E\_mail:info@targetmol.com Address:34 Washington Street,Wellesley Hills,MA 02481