

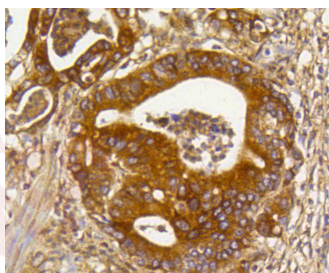
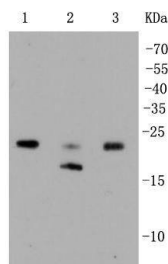
Anti-RhoA/B/C Antibody (1S695)

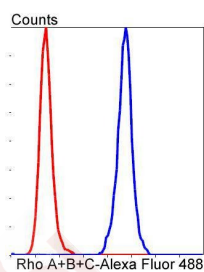
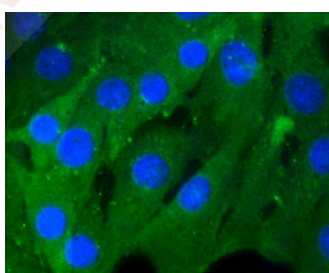
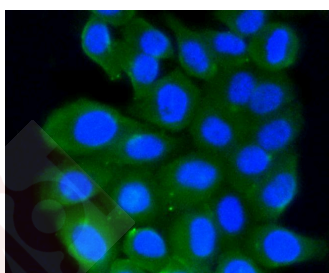
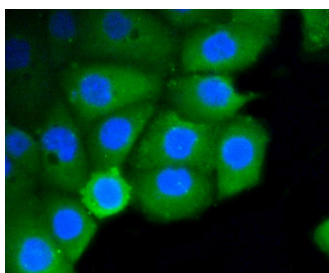
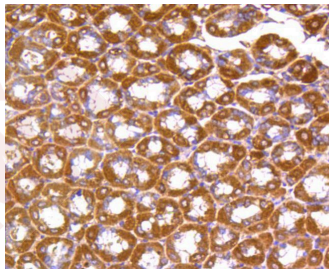
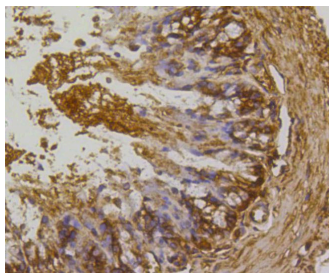
Product Details

| | |
|-------------------|------------------------|
| Ig Type: | IgG |
| Reactivity: | Human,Mouse,Rat |
| Conjugation: | Unconjugated |
| Molecular Weight: | Theoretical: 24 kDa. |
| Clone: | 1S695 |
| Purification: | ProA affinity purified |

Applications

1. Western blot analysis of Rho A+B+C on different lysates using anti-Rho A+B+C antibody at 1/1,000 dilution. Positive control: Lane 1: HepG2, Lane 2: Hela, Lane 3: Jurkat.
 2. Immunohistochemical analysis of paraffin-embedded human gastric carcinoma tissue using anti-Rho A+B+C antibody. Counter stained with hematoxylin.
 3. Immunohistochemical analysis of paraffin-embedded mouse colon tissue using anti-Rho A+B+C antibody. Counter stained with hematoxylin.
 4. Immunohistochemical analysis of paraffin-embedded mouse stomach tissue using anti-Rho A+B+C antibody. Counter stained with hematoxylin.
- Verified Activity:
5. ICC staining Rho A+B+C in Ags cells (green). The nuclear counter stain is DAPI (blue). Cells were fixed in paraformaldehyde, permeabilised with 0.25% Triton X100/PBS.
 6. ICC staining Rho A+B+C in HepG2 cells (green). The nuclear counter stain is DAPI (blue). Cells were fixed in paraformaldehyde, permeabilised with 0.25% Triton X100/PBS.
 7. ICC staining Rho A+B+C in NIH/3T3 cells (green). Cells were fixed in paraformaldehyde, permeabilised with 0.25% Triton X100/PBS.
 8. Flow cytometric analysis of HepG2 cells with Rho A+B+C antibody at 1/50 dilution (blue) compared with an unlabelled control (cells without incubation with primary antibody; red). Alexa Fluor 488-conjugated goat anti rabbit IgG was used as the secondary antibody.





Application: FCM, ICC/IF, IHC, WB

Recommended WB: 1:1000-2000; IHC: 1:200-500; ICC/IF: 1:50-200; FCM: 1:50-100

Properties

Stability & Storage: Store at -20°C or -80°C for 12 months. Avoid repeated freeze-thaw cycles.

Shipping: Shipping with blue ice.

Antigen Details

Immunogen: Recombinant Protein

RHOA;OTTHUMP00000013802;Transforming protein RhoA;RAS-related homolog 9;MGC61427;MSTP081;Small GTP binding protein RhoC;RHOH6;RHOB;ARH12;OTTHUMP00000013676;Ras homolog 9 (RhoC);rho cDNA clone 9;Oncogene RHO H12;H9;OTTMUSP00000025086;Rho cDNA clone 12;Rho related GTP binding protein RhoB;Ras homolog gene family, member B;ARHA;ARHB;RP11-426L16.4;Ras homolog gene family, member C;RHOH12;Rho related GTP binding protein RhoC;Aplysia RAS-related homolog;rhoC GTPase;Aplysia RAS-related homolog 6;RHOC;MGC1448;small GTP binding protein RhoA;Oncogene RHO H6;OTTMUSP00000025087;Rh - related GTP binding protein RhoC;Aplysia ras related homolog 9 (RhoC);H12;OTTHUMP00000013675;OTTHUMP00000013805;ARHC;RHOH9;MGC117867;Oncogene RHO H9;H6;AI324259;MST081;RHO12;Aplysia ras-related homolog 12;OTTHUMP00000013809;Ras homolog gene family, member A;rho cDNA clone 6;OTTHUMP00000013807;AA017882;ARH9;ARH6;Rho A/B/C

Synonyms:

Research Background

The Ras p21 family of guanine nucleotide proteins has been widely studied in view of its apparent role in signal transduction pathways and high frequency of mutations in human malignancies. It is now clear, however, that the Ras proteins (H-, K- and N-Ras p21) are members of a much larger superfamily of related proteins. Six members of this family, Rap 1A, Rap 1B, Rap 2, R-Ras, Ral A and Ral B, exhibit approximately 50% amino acid homology to Ras. The six mammalian Rho proteins (Rho A, B, C, G, 7 and 8) are approximately 30% homologous to Ras and are expressed in a wide range of cell types. Both Ras p21 and Rho p21, as well as other members of the Ras superfamily, contain a carboxy-terminal CAAX sequence (C, cysteine; A, aliphatic amino acid; X, any amino acid) which in the case of Ras has been shown to be essential for correct localization and function.

Inhibitor · Natural Compounds · Compound Libraries · Recombinant Proteins

This product is for Research Use Only · Not for Human or Veterinary or Therapeutic Use

Tel:781-999-4286 E_mail:info@targetmol.com Address:34 Washington Street,Wellesley Hills,MA 02481