

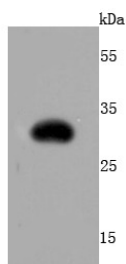
Anti-RFP Antibody (1Y386)

Product Details

Ig Type:	IgG
Reactivity:	All
Conjugation:	Unconjugated
Molecular Weight:	Theoretical: 26 kDa.
Clone:	1Y386
Purification:	ProA affinity purified

Applications

Verified Activity: 1. Western blot analysis of RFP on RFP recombinant protein using anti-RFP antibody at 1/500 dilution.



Application:	ICC/IF,WB
Recommended	WB: 1:500-2000; ICC/IF: 1:50-200

Properties

Stability & Storage: Store at -20°C or -80°C for 12 months. Avoid repeated freeze-thaw cycles.
Shipping: Shipping with blue ice.

Antigen Details

Immunogen:	Recombinant Protein
Uniprot ID:	Q8ISF8
Synonyms:	RFP;DsRed;GFP like chromoprotein;red fluorescent protein

Research Background

Red fluorescent protein cloned from *Entacmaea quadricolor* eqFP611 (Uniprot IDQ8ISF8) is an important tool in biotechnology and cell biology as a spectrally distinct companion or substitute for the green fluorescent protein (GFP; from *Aequorea jellyfish*).

Inhibitor · Natural Compounds · Compound Libraries · Recombinant Proteins

This product is for Research Use Only. Not for Human or Veterinary or Therapeutic Use

Tel:781-999-4286 E_mail:info@targetmol.com Address:34 Washington Street,Wellesley Hills,MA 02481