

Anti-Acetyl-RB1 (Lys873, 874) Polyclonal Antibody

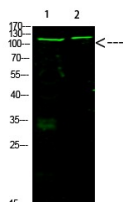
Product Details

Ig Type:	IgG
Reactivity:	Human,Mouse,Rat
Conjugation:	Unconjugated
Molecular Weight:	Theoretical: 106 kDa.
Purification:	The antibody was affinity-purified from rabbit antiserum by affinity-chromatography using epitope-specific immunogen.

Applications

Verified Activity:

1. Western Blot analysis of 1,mouse-heart 3, mouse-brain cells using primary antibody diluted at 1:1000 (°C overnight). Secondary antibodyGoat Anti-rabbit IgG IRDye 800 (diluted at 1:5000, 25°C, 1 hour).



Application:	WB
Recommended	WB: 1:500-2000

Properties

Stability & Storage:	Store at -20°C or -80°C for 12 months. Avoid repeated freeze-thaw cycles.
Shipping:	Shipping with blue ice.

Antigen Details

Immunogen:	A synthesized acetylpeptide: human Rb around the acetylation site of K873/872
Antigen Species:	Human
Synonyms:	Acetyl-RB1 (K873, 874);Ac-RB1 (K873, 874);Ac-RB1 (Lys873, 874);Ac-RB1K873, 874;RB1K873, 874ac;RB1K873, 874-acetylated

Inhibitor · Natural Compounds · Compound Libraries · Recombinant Proteins

This product is for Research Use Only. Not for Human or Veterinary or Therapeutic Use

Tel:781-999-4286 E_mail:info@targetmol.com Address:34 Washington Street,Wellesley Hills,MA 02481