

## Anti-RALBP1 Antibody (4R123)

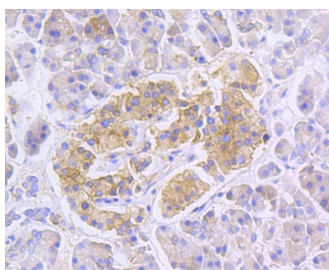
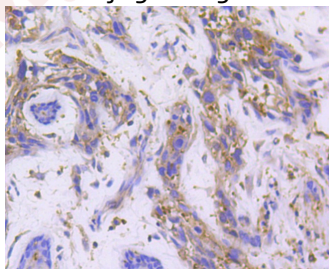
### Product Details

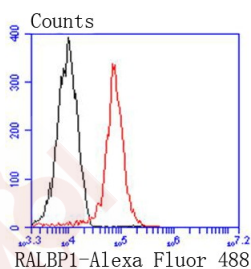
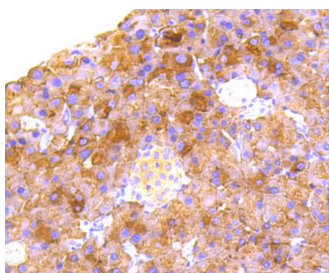
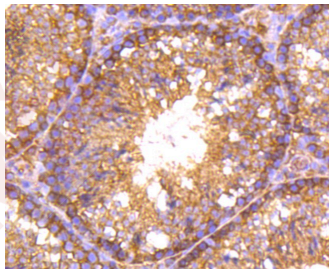
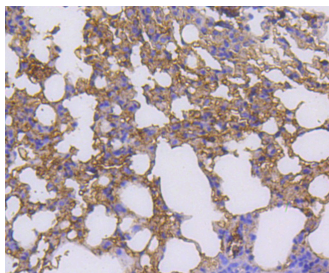
Ig Type:	IgG
Reactivity:	Human,Mouse,Rat
Conjugation:	Unconjugated
Molecular Weight:	Theoretical: 95 kDa.
Clone:	4R123
Purification:	ProA affinity purified

### Applications

#### Verified Activity:

1. Immunohistochemical analysis of paraffin-embedded human breast carcinoma tissue using anti-RALBP1 antibody. Counter stained with hematoxylin.
2. Immunohistochemical analysis of paraffin-embedded human pancreas tissue using anti-RALBP1 antibody. Counter stained with hematoxylin.
3. Immunohistochemical analysis of paraffin-embedded mouse lung tissue using anti-RALBP1 antibody. Counter stained with hematoxylin.
4. Immunohistochemical analysis of paraffin-embedded mouse testis tissue using anti-RALBP1 antibody. Counter stained with hematoxylin.
5. Immunohistochemical analysis of paraffin-embedded mouse pancreas tissue using anti-RALBP1 antibody. Counter stained with hematoxylin.
6. Flow cytometric analysis of 293 cells with RALBP1 antibody at 1/50 dilution (red) compared with an unlabelled control (cells without incubation with primary antibody; black). Alexa Fluor 488-conjugated goat anti rabbit IgG was used as the secondary antibody.





Application: FCM,IHC,WB

Recommended WB: 1:1000-5000; IHC: 1:50-200; FCM: 1:50-100

### Properties

Stability & Storage: Store at -20°C or -80°C for 12 months. Avoid repeated freeze-thaw cycles.

Shipping: Shipping with blue ice.

### Antigen Details

Immunogen: Recombinant Protein

Uniprot ID: Q15311

Synonyms: DNP-SG ATPase;76-kDa Ral-interacting protein;76 kDa Ral-interacting protein;RalA-binding protein 1;RIP1;Dinitrophenyl S-glutathione ATPase;RLIP1;Ral-interacting protein 1, 76-KD; RLIP76;Ral-interacting protein 1;RalBP1;RBP1\_HUMAN;RALBP 1

### Research Background

Ral A and Ral B constitute a distinct subfamily of Ras-related GTPases (i.e., GDP/GTP binding proteins). Ral proteins are activated by a unique nucleotide exchange factor, Ral GDS, and deactivated by a distinct GTPase-activating protein. Unlike Ras proteins, Ral A and Ral B fail to induce transformed foci when activated variants are expressed in

## A DRUG SCREENING EXPERT

---

various recipient cells. A potential downstream target of Ral, designated Ral BP-1, has been shown to contain a Rho-GTPase-activating domain. This Rho-GTPase-activating domain interacts preferentially with the Rho family member Cdc42. A Ras/Ral signaling pathway has been reported to mediate phospholipase D (PLD) activation by v-Src, thus indicating PLD as another downstream target of Ral A.

**Inhibitor · Natural Compounds · Compound Libraries · Recombinant Proteins**

This product is for Research Use Only · Not for Human or Veterinary or Therapeutic Use

Tel:781-999-4286 E\_mail:info@targetmol.com Address:34 Washington Street,Wellesley Hills,MA 02481