

Anti-Phospho-RAF1 (Ser338) Polyclonal Antibody

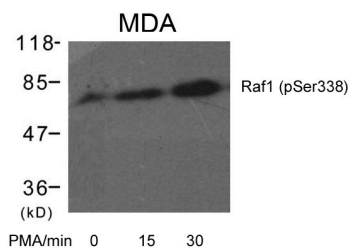
Product Details

Ig Type:	IgG
Reactivity:	Human,Mouse,Rat
Conjugation:	Unconjugated
Purification:	Antibodies were produced by immunizing rabbits with synthetic phosphopeptide and KLH conjugates. Antibodies were purified by affinity-chromatography using epitope-specific phosphopeptide. Non-phospho specific antibodies were removed by chromatography using non-phosphopeptide.

Applications

Verified Activity:

1. Western blot analysis of extracts from MDA cells untreated or treated with PMA for the indicated times using Raf1 (Phospho-Ser338) Antibody TMAC-03523.



Application: WB

Properties

Stability & Storage:	Store at 2°C-8°C for 1 month. Store at -20°C or -80°C for 12 months. Avoid repeated freeze-thaw cycles.
Shipping:	Shipping with blue ice.

Antigen Details

Immunogen:	Peptide sequence around phosphorylation site of serine 338 (R-D-S(p)-S-Y) derived from Human RAF
Antigen Species:	human
Uniprot ID:	P04049
Synonyms:	Phospho-RAF1 (S338);RAF1 (p-S338);p-RAF1 (Ser338);p-RAF1 (S338);RAF1 (p-Ser338)

Research Background

Involved in the transduction of mitogenic signals from the cell membrane to the nucleus. Part of the Ras-dependent signaling pathway from receptors to the nucleus. Protects cells from apoptosis mediated by STK3.

Inhibitor · Natural Compounds · Compound Libraries · Recombinant Proteins

This product is for Research Use Only. Not for Human or Veterinary or Therapeutic Use

Tel:781-999-4286 E_mail:info@targetmol.com Address:34 Washington Street,Wellesley Hills,MA 02481