

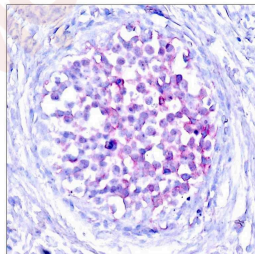
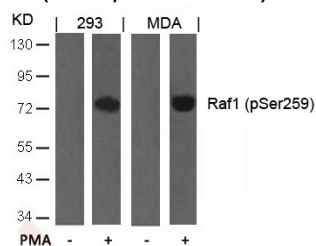
## Anti-Phospho-RAF1 (Ser259) Polyclonal Antibody

### Product Details

Ig Type:	IgG
Reactivity:	Human,Mouse,Rat
Conjugation:	Unconjugated
Purification:	Antibodies were produced by immunizing rabbits with synthetic phosphopeptide and KLH conjugates. Antibodies were purified by affinity-chromatography using epitope-specific phosphopeptide. Non-phospho specific antibodies were removed by chromatography using non-phosphopeptide.

### Applications

- Verified Activity:
- Western blot analysis of extracts from 293 and MDA cells untreated or treated with PMA using Raf1 (Phospho-Ser259) Antibody TMAC-03522.
  - Immunohistochemical analysis of paraffin-embedded human breast carcinoma tissue using Raf1 (Phospho-Ser259) Antibody TMAC-03522.



Application: IHC,WB

### Properties

- Stability & Storage: Store at 2°C-8°C for 1 month. Store at -20°C or -80°C for 12 months. Avoid repeated freeze-thaw cycles.
- Shipping: Shipping with blue ice.

### Antigen Details

Immunogen: Peptide sequence around phosphorylation site of serine 259 (S-T-S(p)-T-P) derived from Human Raf1

Antigen Species: human

Uniprot ID: P04049

Synonyms: Phospho-RAF1 (S259);RAF1 (p-S259);p-RAF1 (S259);p-RAF1 (Ser259);RAF1 (p-Ser259)

---

### Research Background

Involved in the transduction of mitogenic signals from the cell membrane to the nucleus. Part of the Ras-dependent signaling pathway from receptors to the nucleus. Protects cells from apoptosis mediated by STK3.

**Inhibitor · Natural Compounds · Compound Libraries · Recombinant Proteins**

This product is for Research Use Only · Not for Human or Veterinary or Therapeutic Use

Tel:781-999-4286 E\_mail:info@targetmol.com Address:34 Washington Street,Wellesley Hills,MA 02481