

Anti-Phospho-RAD50 (Ser635) Polyclonal Antibody

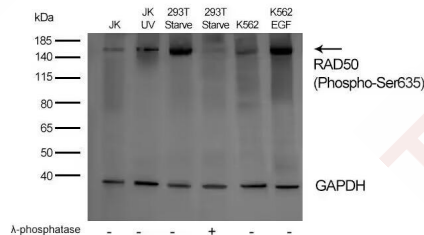
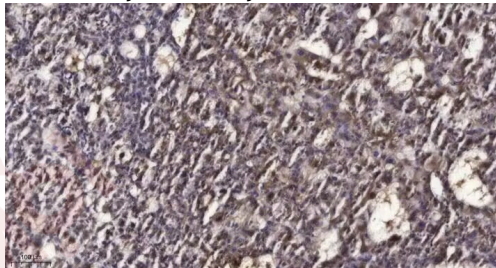
Product Details

Ig Type:	IgG
Reactivity:	Human,Mouse,Rat
Conjugation:	Unconjugated
Molecular Weight:	Theoretical: 154 kDa.
Purification:	Antibodies were produced by immunizing rabbits with synthetic phosphopeptide and KLH conjugates. Antibodies were purified by affinity-chromatography using epitope-specific phosphopeptide. Non-phospho specific antibodies were removed by chromatography using non-phosphopeptide.

Applications

Verified Activity:

1. Immunohistochemical analysis of paraffin-embedded human liver cancer. 1, Antibody was diluted at 1:200 (4°C overnight). 2, Tris-EDTA, pH9.0 was used for antigen retrieval. 3,Secondary antibody was diluted at 1:200 (room temperature, 45min).
2. Western Blot analysis of various cell lysates, using primary antibody at 1:500 dilution. Secondary antibody was diluted at 1:10000.



Application: IHC,WB

Recommended WB: 1:500-2000; IHC: 1:50-300

Properties

Stability & Storage: Store at -20°C or -80°C for 12 months. Avoid repeated freeze-thaw cycles.

Shipping: Shipping with blue ice.

Antigen Details

Immunogen: A synthesized phosphopeptide: human RAD50 around the phosphorylation site of Ser635
Antigen Species: Human
Uniprot ID: Q92878
Synonyms: p-RAD50 (S635);RAD50 (p-Ser635);RAD50 (p-S635);p-RAD50 (Ser635)

Inhibitor · Natural Compounds · Compound Libraries · Recombinant Proteins

This product is for Research Use Only· Not for Human or Veterinary or Therapeutic Use

Tel:781-999-4286 E_mail:info@targetmol.com Address:34 Washington Street,Wellesley Hills,MA 02481