

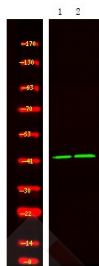
Anti-Phospho-Flap endonuclease 1/FEN-1 (Ser187) Polyclonal Antibody

Product Details

Ig Type:	IgG
Reactivity:	Human,Mouse,Rat
Conjugation:	Unconjugated
Molecular Weight:	Theoretical: 42 kDa.
Purification:	Antibodies were produced by immunizing rabbits with synthetic phosphopeptide and KLH conjugates. Antibodies were purified by affinity-chromatography using epitope-specific phosphopeptide. Non-phospho specific antibodies were removed by chromatography using non-phosphopeptide.

Applications

Verified Activity: 1. Western Blot analysis of lysates of 1. Hela cell and 2. Hela cell treated with 100ng/mL LPS for 30min, using primary antibody at 1:1000 dilution.



Application:	WB
Recommended	WB: 1:1000

Properties

Stability & Storage: Store at -20°C or -80°C for 12 months. Avoid repeated freeze-thaw cycles.
Shipping: Shipping with blue ice.

Antigen Details

Immunogen:	A synthesized phosphopeptide: human Rad2/FEN1 around the phosphorylation site of Ser187
Antigen Species:	human
Uniprot ID:	P39748
Synonyms:	p-Flap endonuclease 1/FEN-1 (Ser187);p-Flap endonuclease 1/FEN-1 (S187);Flap endonuclease 1/FEN-1 (p-Ser187);Flap endonuclease 1/FEN-1 (p-S187)

Inhibitor · Natural Compounds · Compound Libraries · Recombinant Proteins

This product is for Research Use Only. Not for Human or Veterinary or Therapeutic Use

Tel:781-999-4286 E_mail:info@targetmol.com Address:34 Washington Street,Wellesley Hills,MA 02481