

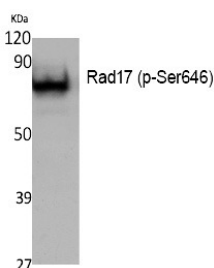
Anti-Phospho-RAD17 (Ser646) Polyclonal Antibody

Product Details

Ig Type:	IgG
Reactivity:	Human,Mouse,Rat
Conjugation:	Unconjugated
Purification:	The antibody was affinity-purified from rabbit antiserum by affinity-chromatography using epitope-specific immunogen.

Applications

Verified Activity: 1. Western Blot analysis of K562, cells using Phospho-Rad17 (S646) Polyclonal Antibody.



Application:	ELISA,WB
Recommended	WB: 1:500-2000; ELISA: 1:10000

Properties

Stability & Storage:	Store at -20°C or -80°C for 12 months. Avoid repeated freeze-thaw cycles.
Shipping:	Shipping with blue ice.

Antigen Details

Immunogen:	A synthesized phosphopeptide: human Rad17 around the phosphorylation site of S646
Antigen Species:	Human
Uniprot ID:	O75943
Synonyms:	RAD17 (p-Ser646);RAD17 (p-S646);p-RAD17 (S646);p-RAD17 (Ser646)

Inhibitor · Natural Compounds · Compound Libraries · Recombinant Proteins

This product is for Research Use Only. Not for Human or Veterinary or Therapeutic Use

Tel:781-999-4286 E_mail:info@targetmol.com Address:34 Washington Street,Wellesley Hills,MA 02481