

Anti-Rack1 Antibody (8C519)

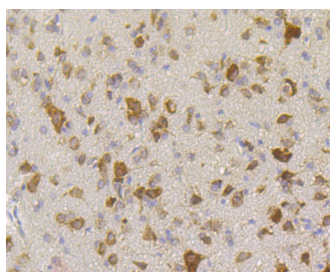
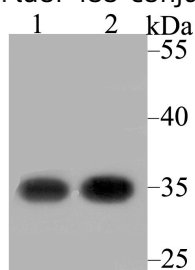
Product Details

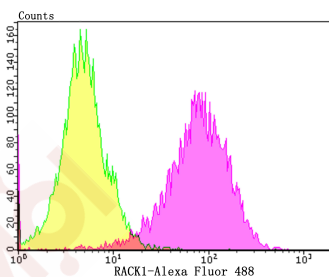
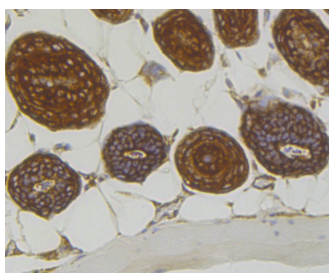
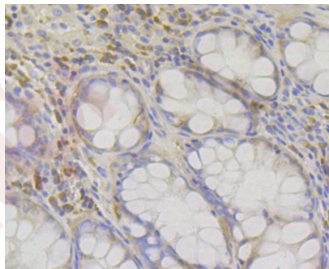
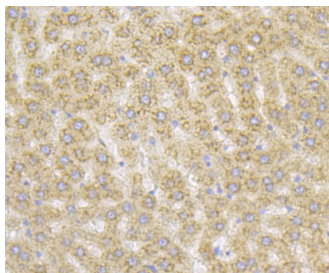
Ig Type:	IgG
Reactivity:	Human,Mouse,Rat
Conjugation:	Unconjugated
Molecular Weight:	Theoretical: 35 kDa.
Clone:	8C519
Purification:	ProA affinity purified

Applications

Verified Activity:

1. Western blot analysis of RACK1 on different lysates using anti-RACK1 antibody at 1/2,000 dilution. Positive control: Lane 1: SH-SY-5Y, Lane 2: Rat small intestine.
2. Immunohistochemical analysis of paraffin-embedded rat cerebellum tissue using anti-RACK1 antibody. Counter stained with hematoxylin.
3. Immunohistochemical analysis of paraffin-embedded rat liver tissue using anti-RACK1 antibody. Counter stained with hematoxylin.
4. Immunohistochemical analysis of paraffin-embedded human colon tissue using anti-RACK1 antibody. Counter stained with hematoxylin.
5. Immunohistochemical analysis of paraffin-embedded mouse skin tissue using anti-RACK1 antibody. Counter stained with hematoxylin.
6. Flow cytometric analysis of SH-SY-5Y cells with RACK1 antibody at 1/100 dilution (purple) compared with an unlabelled control (cells without incubation with primary antibody; yellow). Alexa Fluor 488-conjugated goat anti-rabbit IgG was used as the secondary antibody.





Application: FCM,IHC,WB

Recommended WB: 1:1000-2000; IHC: 1:50-200; FCM: 1:50-100

Properties

Stability & Storage: Store at -20°C or -80°C for 12 months. Avoid repeated freeze-thaw cycles.

Shipping: Shipping with blue ice.

Antigen Details

Immunogen: Recombinant Protein: C-terminal human RACK1

Antigen Species: human

Uniprot ID: P63244

Synonyms: Gnb2-rs1;H12.3;PIG21;HLC-7;RACK1

Research Background

Members of the protein kinase C (PKC) family play a key regulatory role in a variety of cellular functions, including cell growth and differentiation, gene expression, hormone secretion and membrane function. Receptor for activated C kinases, termed RACKs, are intracellular receptors for activated PKC that may be involved in the activation-induced

A DRUG SCREENING EXPERT

translocation of PKC. RACK1 (receptor for activated C kinase 1) is a 317 amino acid G protein b subunit-like protein that functions as a RACK and inhibits the activity of Src tyrosine kinases. In response to PKC activation, the intracellular localization of RACK1 and PKC bII changes, and RACK1 and PKC bII co-localize to the same sites. RACK1 is therefore thought to be a shuttling protein for PKC bII. A deficit in RACK1 may be associated with impaired PKC activation in the aging brain. The RACK1 gene is conserved in chimpanzee, dog, cow, mouse, rat, chicken, zebrafish, fruit fly, mosquito, C.elegans, S.pombe, S.cerevisiae, K.lactis, E.gossypii, M.grisea, N.crassa, A.thaliana, rice and P.falciparum, and maps to human chromosome 5q35.3.

Inhibitor · Natural Compounds · Compound Libraries · Recombinant Proteins

This product is for Research Use Only · Not for Human or Veterinary or Therapeutic Use

Tel:781-999-4286 E_mail:info@targetmol.com Address:34 Washington Street,Wellesley Hills,MA 02481