

Anti-Rabbit IgG κ Light Chain Antibody (4V598)

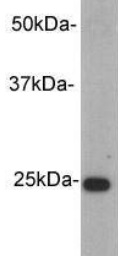
Product Details

Reactivity:	Rabbit
Conjugation:	Unconjugated
Molecular Weight:	Theoretical: 25 kDa.
Clone:	4V598
Purification:	Affinity purified

Applications

Verified Activity:

1. Western blot analysis on rabbit IgG protein using anti-Rabbit IgG kapa light chain Mouse mAb.



Application:	IP, WB
Recommended	IP: 1:500-1000

Properties

Stability & Storage:	Store at -20°C or -80°C for 12 months. Avoid repeated freeze-thaw cycles.
Shipping:	Shipping with blue ice.

Antigen Details

Immunogen:	Rabbit IgG
------------	------------

Inhibitor · Natural Compounds · Compound Libraries · Recombinant Proteins

This product is for Research Use Only. Not for Human or Veterinary or Therapeutic Use

Tel: 781-999-4286 E_mail: info@targetmol.com Address: 34 Washington Street, Wellesley Hills, MA 02481