

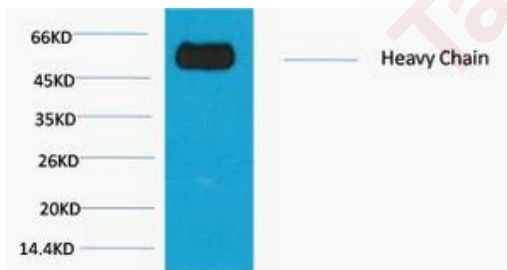
Anti-Rabbit IgG (Fc specific, Heavy Chain) Antibody (1W135)

Product Details

Reactivity:	Rabbit
Conjugation:	Unconjugated
Molecular Weight:	Actual: 55 kDa.
Clone:	1W135
Purification:	The antibody was affinity-purified from antiserum by affinity-chromatography

Applications

Verified Activity: 1. Western blot analysis of Reduced Rabbit IgG, H+L, diluted at 1:10000.



Application:	WB
Recommended	WB: 1:2000-5000

Properties

Stability & Storage:	Store at -20°C or -80°C for 12 months. Avoid repeated freeze-thaw cycles.
Shipping:	Shipping with blue ice.

Inhibitor · Natural Compounds · Compound Libraries · Recombinant Proteins

This product is for Research Use Only. Not for Human or Veterinary or Therapeutic Use

Tel:781-999-4286 E_mail:info@targetmol.com Address:34 Washington Street,Wellesley Hills,MA 02481