

Anti-Rab3a Antibody (70574)

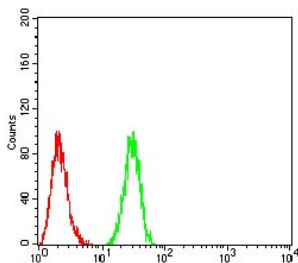
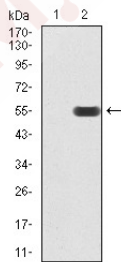
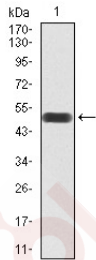
Product Details

Reactivity:	Human
Conjugation:	Unconjugated
Molecular Weight:	Theoretical: 25 kDa.
Clone:	70574
Purification:	ProA affinity purified

Applications

Verified Activity:

1. Western blot analysis of Rab3a on human Rab3a recombinant protein using anti-Rab3a antibody at 1/1,000 dilution.
2. Western blot analysis of Rab3a on HEK293 (1) and Rab3a-hlgGfc transfected HEK293 (2) cell lysate using anti-Rab3a antibody at 1/1,000 dilution.
3. Flow cytometric analysis of Hela cells with Rab3a antibody at 1/100 dilution (green) compared with an unlabelled control (cells without incubation with primary antibody; red).



Application:	FCM,WB
Recommended	WB: 1:500-2000; FCM: 1:100-200

Properties

Stability & Storage: Store at -20°C or -80°C for 12 months. Avoid repeated freeze-thaw cycles.

Shipping: Shipping with blue ice.

Antigen Details

Immunogen: Recombinant Protein

Uniprot ID: P20336

Synonyms: Ras-related protein Rab-3A;Rab 3A;Rab3a;RAB3A member RAS oncogene family;RAS associated protein RAB 3A;RAS associated protein RAB3A;Ras related protein Rab 3A;RAB3A_HUMAN;Ras related protein Rab3A;RAB 3A member RAS oncogene family

Research Background

The Ras-related superfamily of guanine nucleotide binding proteins, which includes the R-Ras, Rap, Ral/Rec and Rho/Rab superfamilies exhibit 30-60% homology with Ras p21. Accumulating data suggests an important role for Rab proteins, either in endocytosis or in biosynthetic protein transport. The transport of newly synthesized proteins from the endoplasmic reticulum to various stacks of the Golgi complex and to secretory vesicles involves at each stage the movement of carrier vesicles, a process that appears to involve Rab protein function. The possibility that Rab proteins might also direct the exocytosis from secretory vesicles to the plasma membrane is supported by the observation that in yeast, the SEC4 protein, which is 40% homologous to Rab proteins, is associated with secretory vesicles. At least eight members of the Rab family have been identified, each of which is found at a particular stage of a membrane transport pathway.

Inhibitor · Natural Compounds · Compound Libraries · Recombinant Proteins

This product is for Research Use Only · Not for Human or Veterinary or Therapeutic Use

Tel:781-999-4286 E_mail:info@targetmol.com Address:34 Washington Street,Wellesley Hills,MA 02481