

## Anti-PDHB Antibody (9C498)

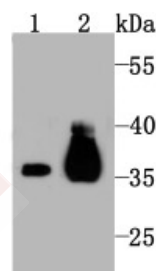
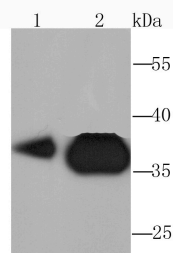
### Product Details

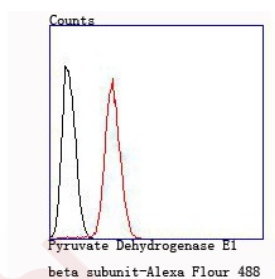
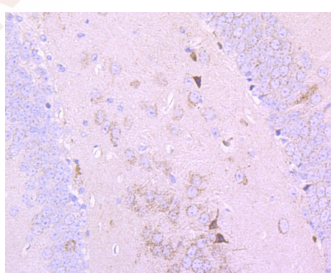
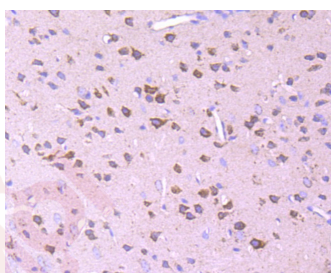
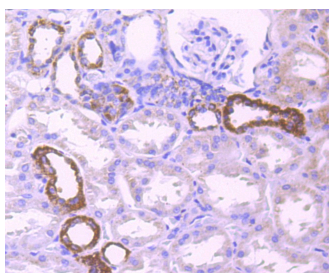
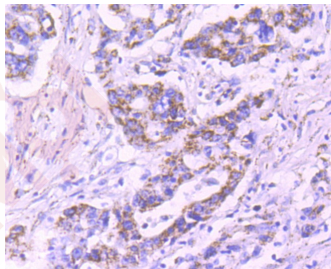
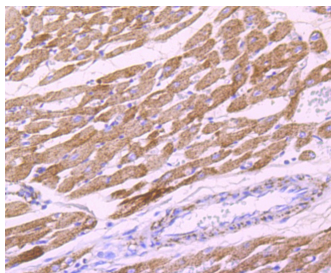
|               |                        |
|---------------|------------------------|
| Ig Type:      | IgG                    |
| Reactivity:   | Human,Mouse,Rat        |
| Conjugation:  | Unconjugated           |
| Clone:        | 9C498                  |
| Purification: | ProA affinity purified |

### Applications

1. Western blot analysis of Pyruvate Dehydrogenase E1 beta subunit on HepG2 (1) and Hela (2) cell lysate using anti-Pyruvate Dehydrogenase E1 beta subunit antibody at 1/1,000 dilution.
2. Western blot analysis of Pyruvate Dehydrogenase E1 beta subunit on mouse kidney tissue (1) and PC-12 (2) cell lysate using anti-Pyruvate Dehydrogenase E1 beta subunit antibody at 1/1,000 dilution.
3. Immunohistochemical analysis of paraffin-embedded rat heart tissue using anti-Pyruvate Dehydrogenase E1 beta subunit antibody. Counter stained with hematoxylin.
4. Immunohistochemical analysis of paraffin-embedded human stomach cancer tissue using anti-Pyruvate Dehydrogenase E1 beta subunit antibody. Counter stained with hematoxylin.
5. Immunohistochemical analysis of paraffin-embedded human kidney tissue using anti-Pyruvate Dehydrogenase E1 beta subunit antibody. Counter stained with hematoxylin.
6. Immunohistochemical analysis of paraffin-embedded mouse brain tissue using anti-Pyruvate Dehydrogenase E1 beta subunit antibody. Counter stained with hematoxylin.
7. Immunohistochemical analysis of paraffin-embedded mouse hippocampus tissue using anti-Pyruvate Dehydrogenase E1 beta subunit antibody. Counter stained with hematoxylin.
8. Flow cytometric analysis of Hela cells with Pyruvate Dehydrogenase E1 beta subunit antibody at 1/100 dilution (red) compared with an unlabelled control (cells without incubation with primary antibody; black).

Verified Activity:





Application: FCM,IHC,IP,WB

Recommended WB: 1:500-2000; IHC: 1:50-200; FCM: 1:50-100

### Properties

Stability & Storage: Store at -20°C or -80°C for 12 months. Avoid repeated freeze-thaw cycles.

Shipping: Shipping with blue ice.

---

### Antigen Details

Immunogen: Recombinant Protein

Uniprot ID: P11177

Synonyms: PDHB;PDHE1-B;Pyruvate dehydrogenase E1 component subunit beta, mitochondrial; mitochondrial;PHE1B

---

### Research Background

The pyruvate dehydrogenase complex catalyzes the overall conversion of pyruvate to acetyl-CoA and CO. It contains multiple copies of three enzymatic components: pyruvate dehydrogenase (E1), dihydrolipoamide acetyltransferase (E2) and lipoamide dehydrogenase (E3). Defects in PDHB are a cause of pyruvate dehydrogenase E1 component deficiency (PDHE1 deficiency). PDHE1 deficiency is the most common enzyme defect in patients with primary lactic acidosis. It is associated with variable clinical phenotypes ranging from neonatal death to prolonged survival complicated by developmental delay, seizures, ataxia, apnea, and in some cases to an X-linked form of Leigh syndrome (LS) (Leigh encephalomyelopathy).

**Inhibitor · Natural Compounds · Compound Libraries · Recombinant Proteins**

This product is for Research Use Only · Not for Human or Veterinary or Therapeutic Use

Tel:781-999-4286 E\_mail:info@targetmol.com Address:34 Washington Street,Wellesley Hills,MA 02481

---