

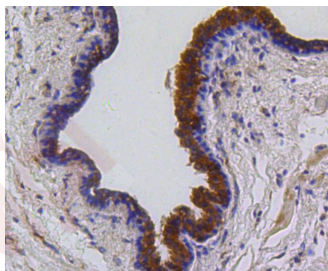
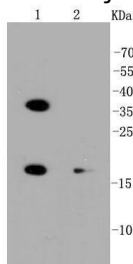
## Anti-PUMA Antibody (5V529)

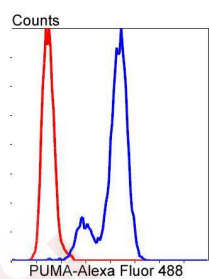
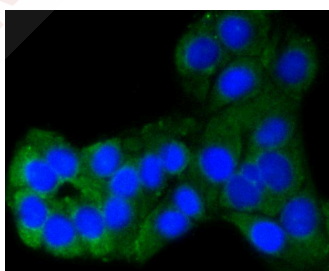
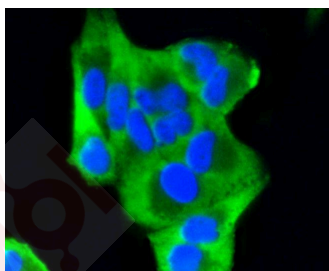
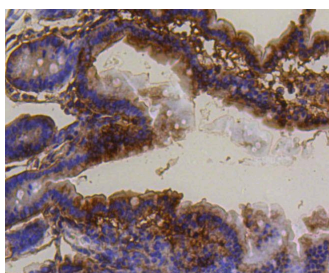
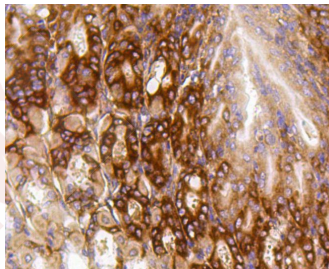
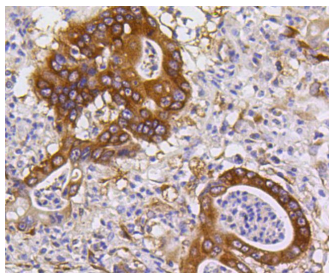
### Product Details

Ig Type:	IgG
Reactivity:	Human,Mouse,Rat
Conjugation:	Unconjugated
Molecular Weight:	Theoretical: 18 kDa.
Clone:	5V529
Purification:	ProA affinity purified

### Applications

1. Western blot analysis of PUMA on different lysates using anti-PUMA antibody at 1/1,000 dilution. Positive control: Lane 1: HeLa, Lane 2: K562.
2. Immunohistochemical analysis of paraffin-embedded human breast carcinoma tissue using anti-PUMA antibody. Counter stained with hematoxylin.
3. Immunohistochemical analysis of paraffin-embedded human gastric carcinoma tissue using anti-PUMA antibody. Counter stained with hematoxylin.
4. Immunohistochemical analysis of paraffin-embedded mouse stomach tissue using anti-PUMA antibody. Counter stained with hematoxylin.
- Verified Activity: 5. Immunohistochemical analysis of paraffin-embedded mouse small intestine tissue using anti-PUMA antibody. Counter stained with hematoxylin.
6. ICC staining PUMA in HeLa cells (green). The nuclear counter stain is DAPI (blue). Cells were fixed in paraformaldehyde, permeabilised with 0.25% Triton X100/PBS.
7. ICC staining PUMA in SKOV-3 cells (green). The nuclear counter stain is DAPI (blue). Cells were fixed in paraformaldehyde, permeabilised with 0.25% Triton X100/PBS.
8. Flow cytometric analysis of HeLa cells with PUMA antibody at 1/50 dilution (blue) compared with an unlabelled control (cells without incubation with primary antibody; red). Alexa Fluor 488-conjugated goat anti rabbit IgG was used as the secondary antibody.





Application: FCM, ICC/IF, IHC, WB

Recommended WB: 1:1000-2000; IHC: 1:50-200; ICC/IF: 1:50-200; FCM: 1:50-100

### Properties

Stability & Storage: Store at -20°C or -80°C for 12 months. Avoid repeated freeze-thaw cycles.

Shipping: Shipping with blue ice.

---

### Antigen Details

Immunogen: Recombinant Protein

Uniprot ID: Q9BXH1

Synonyms: JFY 1;PUMA/JFY1;JFY1;PUMA;BCL2 binding component 3;BBC 3;p53 up regulated modulator of apoptosis;BCL 2 binding component 3;PUMA alpha;BBC3\_RAT;bcl-2 binding component 3;p53 Upregulated Modulator of Apoptosis;BBC3

---

### Research Background

The expression of PUMA is regulated by the tumor suppressor p53. PUMA is involved in p53-dependent and -independent apoptosis induced by a variety of signals, and is regulated by transcription factors, not by post-translational modifications. After activation, PUMA interacts with antiapoptotic Bcl-2 family members, thus freeing Bax and/or Bak which are then able to signal apoptosis to the mitochondria. Following mitochondrial dysfunction, the caspase cascade is activated ultimately leading to cell death. Several studies have shown that PUMA function is affected or absent in cancer cells. Additionally, many human tumors contain p53 mutations, which results in no induction of PUMA, even after DNA damage induced through irradiation or chemotherapy drugs. Other cancers, which exhibit overexpression of antiapoptotic Bcl-2 family proteins, counteract and overpower PUMA-induced apoptosis.

**Inhibitor · Natural Compounds · Compound Libraries · Recombinant Proteins**

This product is for Research Use Only · Not for Human or Veterinary or Therapeutic Use

Tel: 781-999-4286 E\_mail: info@targetmol.com Address: 34 Washington Street, Wellesley Hills, MA 02481