

Anti-Phospho-PTEN (Ser380) Polyclonal Antibody

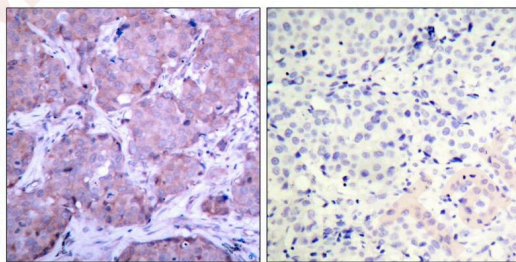
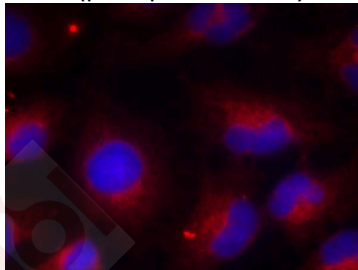
Product Details

Ig Type:	IgG
Reactivity:	Human,Mouse,Rat
Conjugation:	Unconjugated
Molecular Weight:	Theoretical: 54 kDa.
Purification:	Antibodies were produced by immunizing rabbits with synthetic phosphopeptide and KLH conjugates. Antibodies were purified by affinity-chromatography using epitope-specific phosphopeptide. Non-phospho specific antibodies were removed by chromatography using non-phosphopeptide.

Applications

Verified Activity:

1. Immunofluorescence staining of methanol-fixed HeLa cells using PTEN (phospho-Ser380) antibody (TMAC-03462, Red).
2. Immunohistochemical analysis of paraffin-embedded human breast carcinoma tissue using PTEN (phospho-Ser380) antibody (TMAC-03462).



Application:	IF,IHC
Recommended	IHC:1:50-100; IF: 1:100-200

Properties

Stability & Storage:	Store at -20°C or -80°C for 12 months. Avoid repeated freeze-thaw cycles.
Shipping:	Shipping with blue ice.

Antigen Details

Immunogen: Peptide sequence around phosphorylation site of serine 380(R-Y-S(p)-D-T) derived from Human PTEN

Antigen Species: Human

Uniprot ID: P60484

Synonyms: MGC11227;PTEN (p-Ser380);PTEN (p-S380);GLM2;DEC;Mutated in multiple advanced cancers 1; Phospho-PTEN (S380);PTEN1;BZS;Phosphatidylinositol 3,4,5-trisphosphate 3-phosphatase and dual-specificity protein phosphatase PTEN;MMAC1;TEP1;p-PTEN (Ser380);10q23del;MMAC1 phosphatase and tensin homolog deleted on chromosome 10;MHAM;Phosphatase and tensin homolog;Phosphatase and tensin like protein;p-PTEN (S380)

Inhibitor · Natural Compounds · Compound Libraries · Recombinant Proteins

This product is for Research Use Only· Not for Human or Veterinary or Therapeutic Use

Tel:781-999-4286 E_mail:info@targetmol.com Address:34 Washington Street,Wellesley Hills,MA 02481