

Anti-PTEN Antibody (7F933)

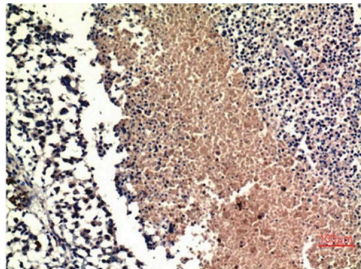
Product Details

Ig Type:	IgG1
Reactivity:	Human
Conjugation:	Unconjugated
Molecular Weight:	Theoretical: 54 kDa.
Clone:	7F933

Applications

Verified Activity:

1. Immunohistochemical analysis of paraffin-embedded Human Lung Carcinoma Tissue using PTEN Mouse mAb diluted at 1:200.



Application:	IHC
Recommended	IHC: 1:100-200

Properties

Stability & Storage:	Store at -20°C or -80°C for 12 months. Avoid repeated freeze-thaw cycles.
Shipping:	Shipping with blue ice.

Antigen Details

Immunogen:	A synthesized peptide
Uniprot ID:	P60484
Synonyms:	GLM2;Phosphatase and tensin like protein;Phosphatase and tensin homolog;MHAM;10q23del; Mutated in multiple advanced cancers 1;DEC;MMAC1;Phosphatidylinositol 3,4,5-trisphosphate 3-phosphatase and dual-specificity protein phosphatase PTEN;BZS;TEP1;MGC11227;PTEN1; MMAC1 phosphatase and tensin homolog deleted on chromosome 10

Inhibitor · Natural Compounds · Compound Libraries · Recombinant Proteins

This product is for Research Use Only. Not for Human or Veterinary or Therapeutic Use

Tel: 781-999-4286 E_mail: info@targetmol.com Address: 34 Washington Street, Wellesley Hills, MA 02481