

Anti-Acetyl-PTEN (Lys402) Polyclonal Antibody

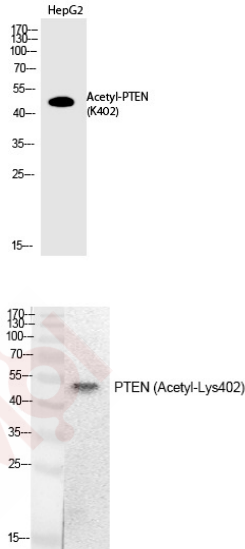
Product Details

Ig Type:	IgG
Reactivity:	Human,Mouse,Rat
Conjugation:	Unconjugated
Molecular Weight:	Actual: 47 kDa.
Purification:	The antibody was affinity-purified from rabbit antiserum by affinity-chromatography using epitope-specific immunogen.

Applications

Verified Activity:

1. Western Blot analysis of HepG2 cells using Acetyl-PTEN (K402) Polyclonal Antibody.
2. Western Blot analysis of HepG2 cells using Acetyl-PTEN (K402) Polyclonal Antibody.



Application:	ELISA,WB
Recommended	WB: 1:500-2000; ELISA: 1:20000

Properties

Stability & Storage:	Store at -20°C or -80°C for 12 months. Avoid repeated freeze-thaw cycles.
Shipping:	Shipping with blue ice.

Antigen Details

Immunogen: A synthesized acetylpeptide: human PTEN around the acetylation site of K402
Antigen Species: Human
Synonyms: Acetyl-PTEN (K402);Ac-PTEN (Lys402);Ac-PTEN (K402);PTENK402ac;Ac-PTENK402;PTENK402-acetylated

Inhibitor · Natural Compounds · Compound Libraries · Recombinant Proteins

This product is for Research Use Only· Not for Human or Veterinary or Therapeutic Use

Tel:781-999-4286 E_mail:info@targetmol.com Address:34 Washington Street,Wellesley Hills,MA 02481