

Anti-PSMA1 Antibody (8C777)

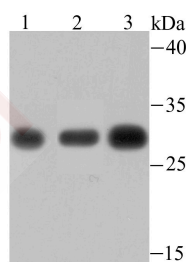
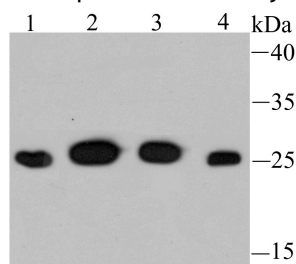
Product Details

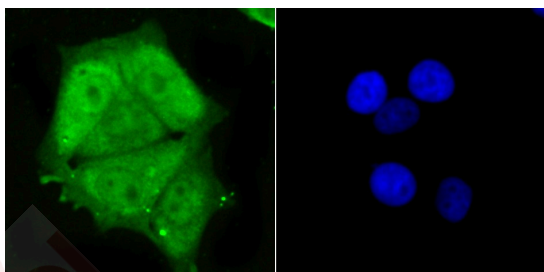
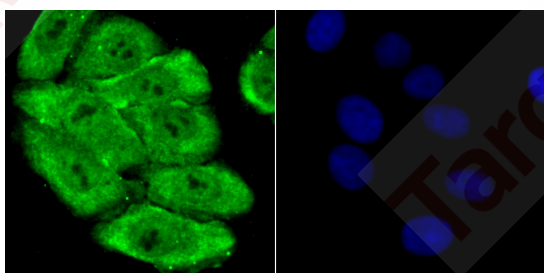
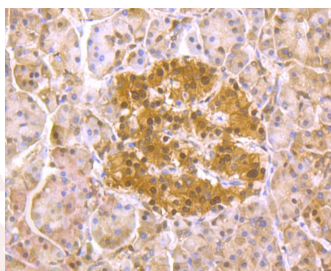
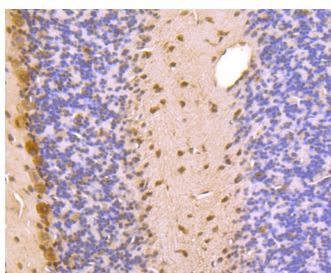
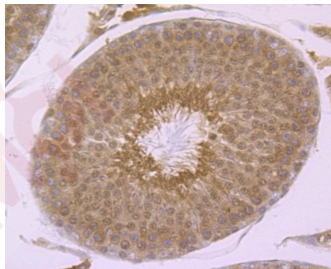
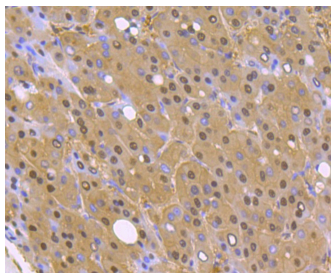
Ig Type:	IgG
Reactivity:	Human,Mouse,Rat
Conjugation:	Unconjugated
Molecular Weight:	Theoretical: 30 kDa.
Clone:	8C777
Purification:	ProA affinity purified

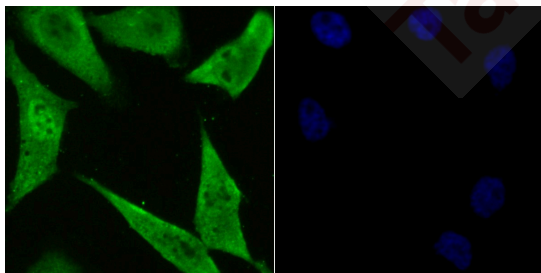
Applications

Verified Activity:

1. Western blot analysis of PSMA1 on different cell lysates using anti-PSMA1 antibody at 1/500 dilution. Positive control: Lane 1: Jurkat, Lane 2: Hela, Lane 3: HepG2, Lane 4: 293.
2. Western blot analysis of PSMA1 on different lysates using anti-PSMA1 antibody at 1/500 dilution. Positive control: Lane 1: PC-12, Lane 2: Mouse spleen tissue, Lane 3: Rat spleen tissue.
3. Immunohistochemical analysis of paraffin-embedded human liver cancer tissue using anti-PSMA1 antibody. Counter stained with hematoxylin.
4. Immunohistochemical analysis of paraffin-embedded rat testis tissue using anti-PSMA1 antibody. Counter stained with hematoxylin.
5. Immunohistochemical analysis of paraffin-embedded mouse cerebellum tissue using anti-PSMA1 antibody. Counter stained with hematoxylin.
6. Immunohistochemical analysis of paraffin-embedded human pancreas tissue using anti-PSMA1 antibody. Counter stained with hematoxylin.
7. ICC staining PSMA1 in HepG2 cells (green). The nuclear counter stain is DAPI (blue). Cells were fixed in paraformaldehyde, permeabilised with 0.25% Triton X100/PBS.
8. ICC staining PSMA1 in MCF-7 cells (green). The nuclear counter stain is DAPI (blue). Cells were fixed in paraformaldehyde, permeabilised with 0.25% Triton X100/PBS.
9. ICC staining PSMA1 in PC-3M cells (green). The nuclear counter stain is DAPI (blue). Cells were fixed in paraformaldehyde, permeabilised with 0.25% Triton X100/PBS.







Application: FCM,ICC/IF,IHC,IP,WB

Recommended WB: 1:500-2000; IHC: 1:50-200; ICC/IF: 1:200-1000; FCM: 1:50-100

Properties

Stability & Storage: Store at -20°C or -80°C for 12 months. Avoid repeated freeze-thaw cycles.

Shipping: Shipping with blue ice.

Antigen Details

Immunogen: Recombinant Protein

Uniprot ID: P25786

Synonyms: MGC14751;PSC2;Proteasome subunit alpha type 1;PSC 2;Proteasome alpha 1 subunit; MGC21459;Proteasome subunit nu;PSA1_HUMAN;MGC14542;PROS 30;Macropain subunit nu;30 kDa prosomal protein;HC 2;MGC1667;Proteasome nu chain;PSMA 1;MGC14575;Proteasome component C2;MGC23915;Macropain subunit C2;Proteasome subunit alpha type 1;Protein P30 33K;Proteasome (prosome macropain) subunit alpha type 1;HC2;Multicatalytic endopeptidase complex subunit C2;MGC22853;Proteasome subunit alpha type-1;NU;PROS30;PROS-30

Research Background

The proteasome is a multicatalytic proteinase complex which is characterized by its ability to cleave peptides with Arg, Phe, Tyr, Leu, and Glu adjacent to the leaving group at neutral or slightly basic pH. The proteasome has an ATP-dependent proteolytic activity. Mediates the lipopolysaccharide-induced signal transduction in the macrophage proteasome. Might be involved in the inflammatory response of macrophages during the interaction with *C.albicans* heat-inactivated cells.

Inhibitor · Natural Compounds · Compound Libraries · Recombinant Proteins

This product is for Research Use Only · Not for Human or Veterinary or Therapeutic Use

Tel:781-999-4286 E_mail:info@targetmol.com Address:34 Washington Street,Wellesley Hills,MA 02481
