

Anti-PSIP1 Antibody (71174)

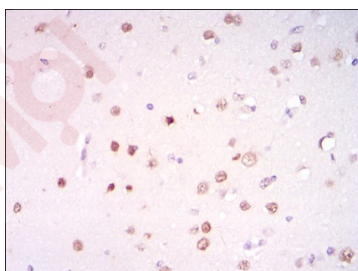
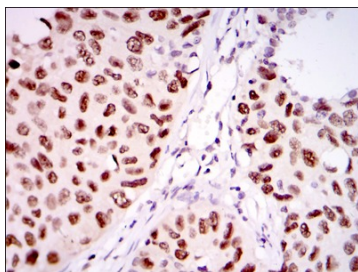
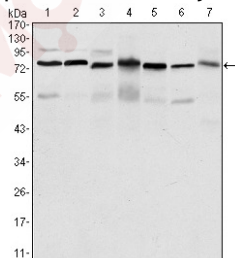
Product Details

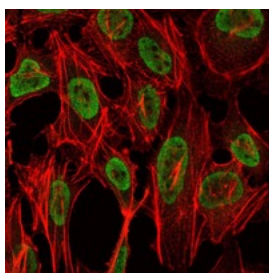
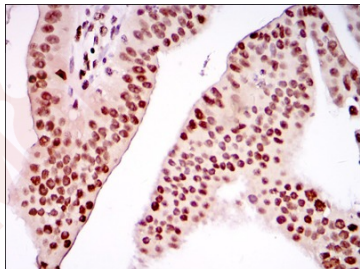
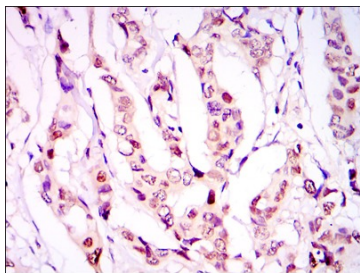
Reactivity:	Human,Monkey,Rat
Conjugation:	Unconjugated
Molecular Weight:	Theoretical: 75 kDa.
Clone:	71174
Purification:	ProA affinity purified

Applications

Verified Activity:

1. Western blot analysis of PSIP1 on different cell lysates using anti-PSIP1 antibody at 1/1,000 dilution. Positive control: Lane 1: HepG2, Lane 2: Jurkat, Lane 3: K562, Lane 4: Cos7, Lane 5: PC-12, Lane 6: HeLa, Lane 7: NIH/3T3.
2. Immunohistochemical analysis of paraffin-embedded human lung cancer tissue using anti-PSIP1 antibody. Counter stained with hematoxylin.
3. Immunohistochemical analysis of paraffin-embedded brain tissue using anti-PSIP1 antibody. Counter stained with hematoxylin.
4. Immunohistochemical analysis of paraffin-embedded human breast cancer tissue using anti-PSIP1 antibody. Counter stained with hematoxylin.
5. Immunohistochemical analysis of paraffin-embedded human ovarian cancer tissue using anti-PSIP1 antibody. Counter stained with hematoxylin.
6. ICC staining PSIP1 (green) and actin filaments (red) in NIH/3T3 cells. Cells were fixed in paraformaldehyde, permeabilised with 0.25% Triton X100/PBS.





Application: ICC,IHC,WB

Recommended WB: 1:500-1000; IHC: 1:100-500; ICC: 1:100-500

Properties

Stability & Storage: Store at -20°C or -80°C for 12 months. Avoid repeated freeze-thaw cycles.

Shipping: Shipping with blue ice.

Antigen Details

Immunogen: Recombinant Protein

Uniprot ID: O75475

Synonyms: DFS70;LEDGF;Transcriptional coactivator p75/p52;PSIP2;Dense fine speckles 70 kDa protein (DFS 70);Lens epithelium-derived growth factor;PSIP1;PC4 and SFRS1-interacting protein;CLL-associated antigen KW-7

Research Background

PSIP1 (PC4 and SFRS1 interacting protein 1), also known as CLL-associated antigen KW-7, PSIP2, LEDGF (lens epithelium-derived growth factor), PAIP, DFS70 (dense fine speckles 70 kDa protein) or transcriptional coactivator p75/p52, is a 530 amino acid nuclear protein that associates with chromatin throughout the cell cycle. Functioning as a transcriptional coactivator that complexes with the human immunodeficiency virus type 1 (HIV-1) integrase, PSIP1 is essential for the nuclear localization and chromosomal association of viral proteins. As the primary integrase-to-chromatin tethering factor for HIV-1, PSIP1 is responsible for the cellular trafficking of lentiviral integrases. During apoptosis, PSIP1 is cleaved at three sites by caspase-3 and caspase-7, contributing to the pathogenesis of atopic disorders.

Inhibitor · Natural Compounds · Compound Libraries · Recombinant Proteins

This product is for Research Use Only · Not for Human or Veterinary or Therapeutic Use

Tel:781-999-4286 E_mail:info@targetmol.com Address:34 Washington Street,Wellesley Hills,MA 02481