

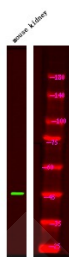
## Anti-Phospho-PSEN1 (Ser353) Polyclonal Antibody

### Product Details

Ig Type:	IgG
Reactivity:	Human,Mouse,Rat
Conjugation:	Unconjugated
Molecular Weight:	Theoretical: 60 kDa.
Purification:	Antibodies were produced by immunizing rabbits with synthetic phosphopeptide and KLH conjugates. Antibodies were purified by affinity-chromatography using epitope-specific phosphopeptide. Non-phospho specific antibodies were removed by chromatography using non-phosphopeptide.

### Applications

Verified Activity: 1. Western Blot analysis of lysates of mouse kidney tissue, using primary antibody at 1:1000 dilution.



Application: WB  
Recommended WB: 1:1000

### Properties

Stability & Storage: Store at -20°C or -80°C for 12 months. Avoid repeated freeze-thaw cycles.  
Shipping: Shipping with blue ice.

### Antigen Details

Immunogen: A synthesized phosphopeptide: human PSEN1 around the phosphorylation site of Ser353  
Antigen Species: human  
Uniprot ID: P49768  
Synonyms: PSEN1 (p-Ser353);p-PSEN1 (Ser353);PSEN1 (p-S353);p-PSEN1 (S353)

**Inhibitor · Natural Compounds · Compound Libraries · Recombinant Proteins**

This product is for Research Use Only. Not for Human or Veterinary or Therapeutic Use

Tel:781-999-4286 E\_mail:info@targetmol.com Address:34 Washington Street,Wellesley Hills,MA 02481