

Anti-PRPF8 Antibody (4V102)

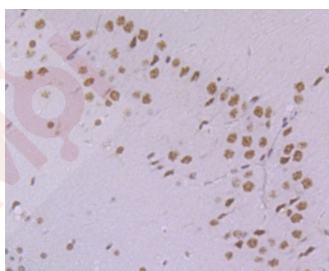
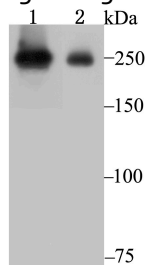
Product Details

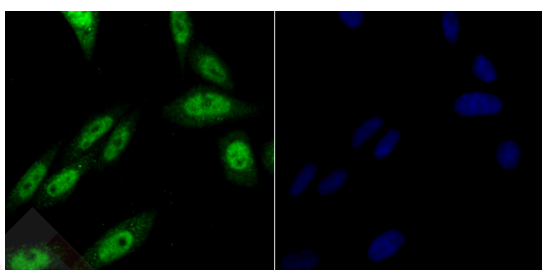
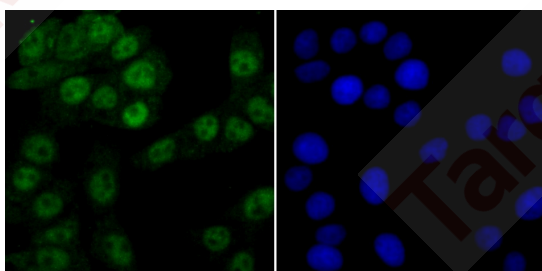
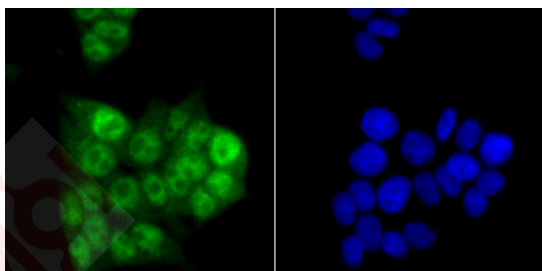
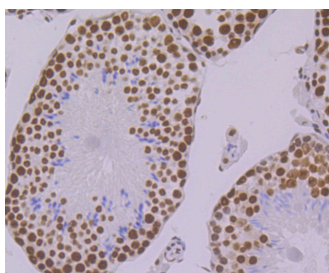
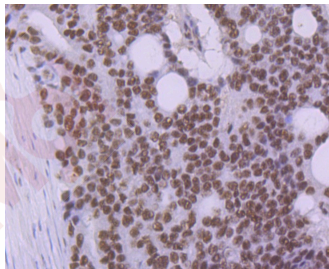
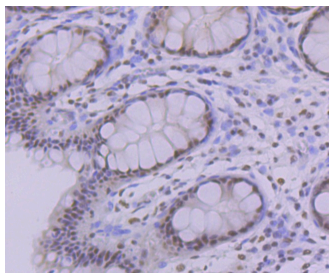
Ig Type:	IgG
Reactivity:	Human,Mouse,Rat
Conjugation:	Unconjugated
Molecular Weight:	Theoretical: 274 kDa.
Clone:	4V102
Purification:	ProA affinity purified

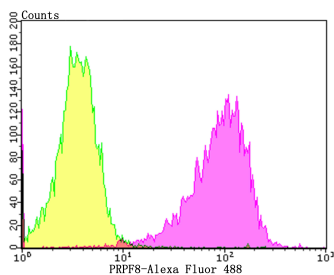
Applications

1. Western blot analysis of PRPF8 on SiHa (1) and A549 (2) cell lysate using anti-PRPF8 antibody at 1/1,000 dilution.
2. Immunohistochemical analysis of paraffin-embedded rat brain tissue using anti-PRPF8 antibody. Counter stained with hematoxylin.
3. Immunohistochemical analysis of paraffin-embedded human colon tissue using anti-PRPF8 antibody. Counter stained with hematoxylin.
4. Immunohistochemical analysis of paraffin-embedded human prostate cancer tissue using anti-PRPF8 antibody. Counter stained with hematoxylin.
5. Immunohistochemical analysis of paraffin-embedded mouse testis tissue using anti-PRPF8 antibody. Counter stained with hematoxylin.
6. ICC staining PRPF8 in 293T cells (green). The nuclear counter stain is DAPI (blue). Cells were fixed in paraformaldehyde, permeabilised with 0.25% Triton X100/PBS.
7. ICC staining PRPF8 in LOVO cells (green). The nuclear counter stain is DAPI (blue). Cells were fixed in paraformaldehyde, permeabilised with 0.25% Triton X100/PBS.
8. ICC staining PRPF8 in SiHa cells (green). The nuclear counter stain is DAPI (blue). Cells were fixed in paraformaldehyde, permeabilised with 0.25% Triton X100/PBS.
9. Flow cytometric analysis of A549 cells with PRPF8 antibody at 1/100 dilution (red) compared with an unlabelled control (cells without incubation with primary antibody; black).Alexa Fluor 488-conjugated goat anti-rabbit IgG was used as the secondary antibody.

Verified Activity:







Application: FCM,ICC,IHC,WB

Recommended WB: 1:500-2000; IHC: 1:50-200; ICC: 1:50-200; FCM: 1:50-100

Properties

Stability & Storage: Store at -20°C or -80°C for 12 months. Avoid repeated freeze-thaw cycles.

Shipping: Shipping with blue ice.

Antigen Details

Immunogen: Recombinant Protein: 1C200 of human PRPF8

Antigen Species: human

Uniprot ID: Q6P2Q9

PRPC8;Prpf 8;U5 snRNP specific protein (220 kD), ortholog of *S. cerevisiae* Prp8p;SNRNP220; Splicing factor Prp8;p220;220 kDa U5 snRNP-specific protein;PRP8_HUMAN;HPRP8;PRP8;220 kDa U5 snRNP specific protein;Apoptosis regulated protein 1;Precursor mRNA processing protein;Pre-mRNA-processing-splicing factor 8;Retinitis pigmentosa 13 (autosomal dominant); PRP8 homolog;Apoptosis regulated protein 2;PRP8 pre mRNA processing factor 8 homolog; RP13;U5 snRNP specific protein;Pre mRNA processing factor 8;Pre mRNA-processing factor 8, *S. cerevisiae*, homolog of

Research Background

PRP8, also designated pre-mRNA-processing-splicing factor 8, is a highly conserved nuclear protein and a central component of the catalytic core of the spliceosome, where it may be involved in various molecular rearrangements. PRP8, which is widely expressed, plays a role in transesterification reactions that regulate spliceosome-induced pre-mRNA splicing. Specifically, PRP8 interacts with the GU dinucleotide at the 5' splice site (5'SS) and forms a specific UV-inducible cross-link. It also interacts functionally with the 3'SS, affecting the efficiency of the second catalytic step. PRP8 may play a role in the first transesterification step, as PRP8 mutations that prohibit negative regulation of PRP28 or PRP44/Brr2 subsequently block U4 activation. In addition, PRP8 interacts with a conserved region of U6 that is instrumental in the formation of the catalytic core of the spliceosome.

Inhibitor · Natural Compounds · Compound Libraries · Recombinant Proteins

This product is for Research Use Only · Not for Human or Veterinary or Therapeutic Use

Tel:781-999-4286

E_mail:info@targetmol.com

Address:34 Washington Street,Wellesley Hills,MA 02481