

Anti-Protein Kinase D2/PRKD2 Antibody (50381)

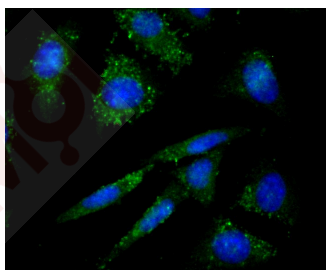
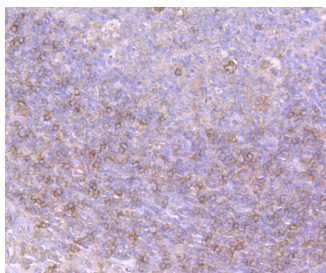
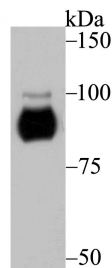
Product Details

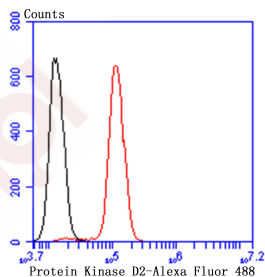
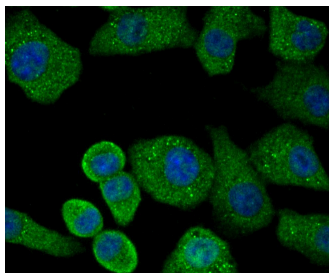
Ig Type:	IgG
Reactivity:	Human,Mouse
Conjugation:	Unconjugated
Molecular Weight:	Theoretical: 97 kDa.
Clone:	50381
Purification:	ProA affinity purified

Applications

Verified Activity:

1. Western blot analysis of Protein Kinase D2 on A549 cell using anti-Protein Kinase D2 antibody at 1/500 dilution.
2. Immunohistochemical analysis of paraffin-embedded human tonsil tissue using anti-Protein Kinase D2 antibody. Counter stained with hematoxylin.
3. ICC staining Protein Kinase D2 in SH-SY-5Y cells (green). The nuclear counter stain is DAPI (blue). Cells were fixed in paraformaldehyde, permeabilised with 0.25% Triton X100/PBS.
4. ICC staining Protein Kinase D2 in A549 cells (green). The nuclear counter stain is DAPI (blue). Cells were fixed in paraformaldehyde, permeabilised with 0.25% Triton X100/PBS.
5. Flow cytometric analysis of SH-SY-5Y cells with Protein Kinase D2 antibody at 1/50 dilution (red) compared with an unlabelled control (cells without incubation with primary antibody; black). Alexa Fluor 488-conjugated goat anti rabbit IgG was used as the secondary antibody.





Application: FCM,ICC,IF,IHC,WB

Recommended WB: 1:1000-5000; IHC: 1:50-200; ICC: 1:50-100; FCM: 1:50-100

Properties

Stability & Storage: Store at -20°C or -80°C for 12 months. Avoid repeated freeze-thaw cycles.

Shipping: Shipping with blue ice.

Antigen Details

Immunogen: Recombinant Protein

Uniprot ID: Q9BZL6

Synonyms: HSPC187;nPKC-D2;PKD2;protein kinase D2

Inhibitor · Natural Compounds · Compound Libraries · Recombinant Proteins

This product is for Research Use Only · Not for Human or Veterinary or Therapeutic Use

Tel:781-999-4286 E_mail:info@targetmol.com Address:34 Washington Street,Wellesley Hills,MA 02481