

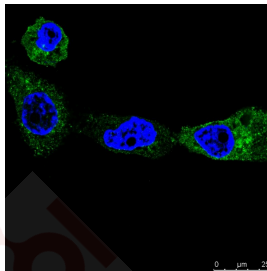
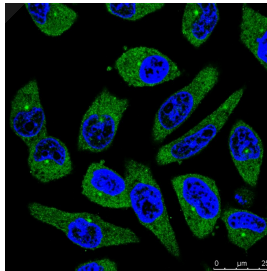
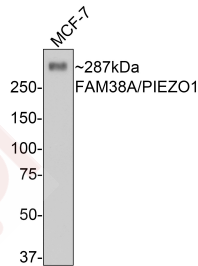
Anti-PIEZO1 Antibody (9P32)

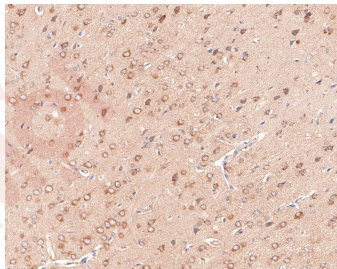
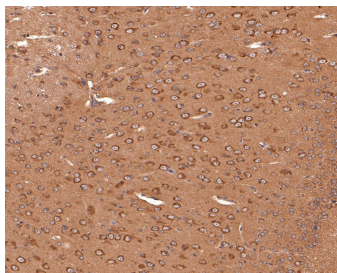
Product Details

Reactivity:	Human, Mouse
Conjugation:	Unconjugated
Molecular Weight:	Theoretical: 287 kDa.
Clone:	9P32
Purification:	ProA affinity purified

Applications

- Verified Activity:
1. Western blot analysis of FAM38A on MCF-7 cell lysates with Mouse anti-FAM38A antibody at 1/500 dilution.
 2. Immunocytochemistry analysis of Hela cells with FAM38A at 1/100 dilution.
 3. Immunocytochemistry analysis of A431 cells with FAM38A at 1/100 dilution.
 4. Immunohistochemical analysis of paraffin-embedded mouse brain tissue with FAM38A at 1/200 dilution.
 5. Immunohistochemical analysis of paraffin-embedded rat brain tissue with FAM38A at 1/600 dilution.





Application: ICC,IHC,WB

Recommended WB: 1:500-2000; IHC: 1:200-600; ICC 1:100

Properties

Stability & Storage: Store at -20°C or -80°C for 12 months. Avoid repeated freeze-thaw cycles.

Shipping: Shipping with blue ice.

Antigen Details

Immunogen: Recombinant Protein

Uniprot ID: Q92508

Synonyms: PIEZO1;Protein FAM38A;KIAA0233;Membrane protein induced by beta-amyloid treatment (Mib);FAM38A;Piezo-type mechanosensitive ion channel component 1

Research Background

Pore-forming subunit of a mechanosensitive non-specific cation channel. Generates currents characterized by a linear current-voltage relationship that are sensitive to ruthenium red and gadolinium. Plays a key role in epithelial cell adhesion by maintaining integrin activation through R-Ras recruitment to the ER, most probably in its activated state, and subsequent stimulation of calpain signaling. In the kidney, may contribute to the detection of intraluminal pressure changes and to urine flow sensing. Acts as shear-stress sensor that promotes endothelial cell organization and alignment in the direction of blood flow through calpain activation. Plays a key role in blood vessel formation and vascular structure in both development and adult physiology.

Inhibitor · Natural Compounds · Compound Libraries · Recombinant Proteins

This product is for Research Use Only · Not for Human or Veterinary or Therapeutic Use

Tel:781-999-4286 E_mail:info@targetmol.com Address:34 Washington Street,Wellesley Hills,MA 02481
