

## Anti-C Antibody (3X679)

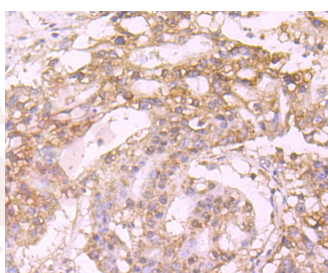
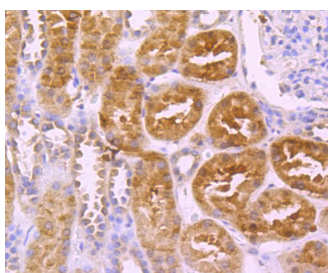
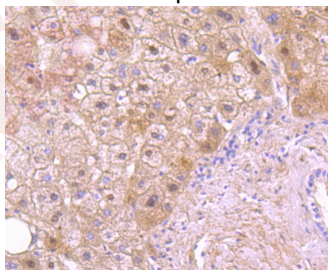
### Product Details

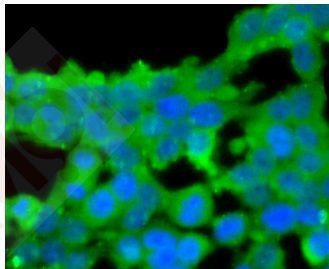
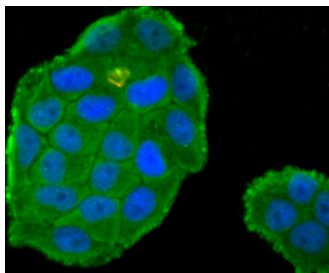
Ig Type:	IgG
Reactivity:	Human
Conjugation:	Unconjugated
Molecular Weight:	Theoretical: 52 kDa.
Clone:	3X679
Purification:	ProA affinity purified

### Applications

#### Verified Activity:

1. Immunohistochemical analysis of paraffin-embedded human liver tissue using anti-Protein C antibody. Counter stained with hematoxylin.
2. Immunohistochemical analysis of paraffin-embedded human kidney tissue using anti-Protein C antibody. Counter stained with hematoxylin.
3. Immunohistochemical analysis of paraffin-embedded human stomach cancer tissue using anti-Protein C antibody. Counter stained with hematoxylin.
4. ICC staining Protein C in Hela cells (green). The nuclear counter stain is DAPI (blue). Cells were fixed in paraformaldehyde, permeabilised with 0.25% Triton X100/PBS.
5. ICC staining Protein C in 293T cells (green). The nuclear counter stain is DAPI (blue). Cells were fixed in paraformaldehyde, permeabilised with 0.25% Triton X100/PBS.





Application: ICC,IHC,WB  
Recommended WB: 1:500; IHC: 1:50-200; ICC: 1:50-200

### Properties

Stability & Storage: Store at -20°C or -80°C for 12 months. Avoid repeated freeze-thaw cycles.  
Shipping: Shipping with blue ice.

### Antigen Details

Immunogen: Recombinant Protein  
Uniprot ID: P04070  
Synonyms: protein C, inactivator of coagulation factors Va and VIIIa;APC;THPH4;PROC;PROC1;THPH3;PC

### Research Background

Protein C is a vitamin K-dependent plasma protein that is produced in the liver and made up of two polypeptide chains. It is an important coagulant activated by Thrombin bound to an endothelial surface receptor and it enzymatically cleaves activated forms of Factors V and VIII, dest? inflammatory blood coagulation. Protein C is similar to the prothrombin group of blood coagulation factors in its primary structure. Normal protein C concentration in human plasma is approximately 1-3 ng / ml and the proenzyme concentration is approximately 3 µg / ml. Protein C deficiency is associated with inherited thrombophilia, a rare genetic disorder that predisposes affected individuals to venous thrombosis and habitual abortion.

**Inhibitor · Natural Compounds · Compound Libraries · Recombinant Proteins**

This product is for Research Use Only· Not for Human or Veterinary or Therapeutic Use

Tel:781-999-4286 E\_mail:info@targetmol.com Address:34 Washington Street,Wellesley Hills,MA 02481