

## Anti-Proteasome 20S C2 Antibody (1C993)

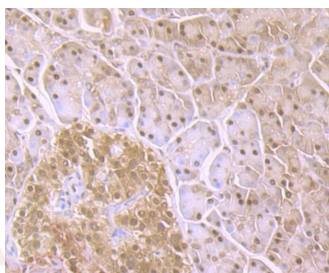
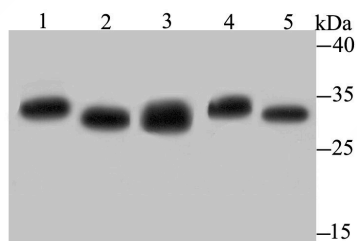
### Product Details

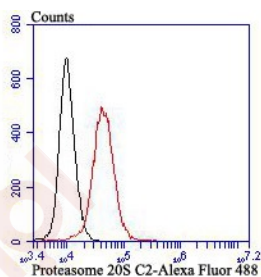
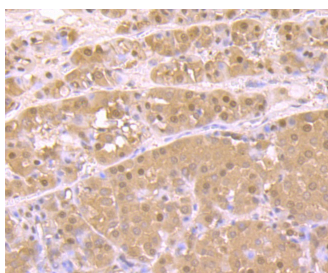
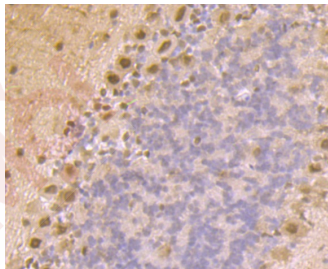
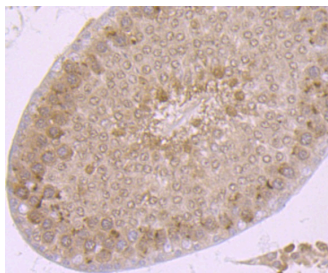
Ig Type:	IgG
Reactivity:	Human,Mouse,Rat
Conjugation:	Unconjugated
Molecular Weight:	Theoretical: 30 kDa.
Clone:	1C993
Purification:	ProA affinity purified

### Applications

#### Verified Activity:

1. Western blot analysis of Proteasome 20S C2 on different lysates using anti-Proteasome 20S C2 antibody at 1/500 dilution. Positive control: Lane 1: PC-3M, Lane 2: K562, Lane 3: Rat testis, Lane 4: Mouse testis, Lane 5: Mouse colon.
2. Immunohistochemical analysis of paraffin-embedded human pancreas tissue using anti-Proteasome 20S C2 antibody. Counter stained with hematoxylin.
3. Immunohistochemical analysis of paraffin-embedded rat testis tissue using anti-Proteasome 20S C2 antibody. Counter stained with hematoxylin.
4. Immunohistochemical analysis of paraffin-embedded mouse cerebellum tissue using anti-Proteasome 20S C2 antibody. Counter stained with hematoxylin.
5. Immunohistochemical analysis of paraffin-embedded human liver cancer tissue using anti-Proteasome 20S C2 antibody. Counter stained with hematoxylin.
6. Flow cytometric analysis of K562 cells with Proteasome 20S C2 antibody at 1/100 dilution (red) compared with an unlabelled control (cells without incubation with primary antibody; black). Alexa Fluor 488-conjugated goat anti rabbit IgG was used as the secondary antibody.





Application: FCM,IHC,IP,WB

Recommended WB: 1:500-2000; IHC: 1:50-200; ICC: 1:50-200; FCM: 1:50-100

### Properties

Stability & Storage: Store at -20°C or -80°C for 12 months. Avoid repeated freeze-thaw cycles.

Shipping: Shipping with blue ice.

### Antigen Details

Immunogen: Recombinant Protein

Uniprot ID: P25786

Synonyms: psmA1;MGC14575;MGC1667;Multicatalytic endopeptidase complex subunit C2;PSA1\_HUMAN; 30 kDa prosomal protein;Proteasome subunit alpha type I;Macropain subunit C2;PSC 2;HC 2; PROS-30;Proteasome component C2;MGC22853;MGC23915;PSMA 1;Macropain subunit nu; Proteasome nu chain;PSC2;MGC21459;Proteasome subunit alpha type-1;Proteasome alpha 1 subunit;HC2;Proteasome subunit alpha type 1;PROS30;MGC14751;Proteasome (prosome

macropain) subunit alpha type 1;Proteasome subunit nu;MGC14542;Protein P30 33K;PROS 30; NU

---

### Research Background

Component of the 20S core proteasome complex involved in the proteolytic degradation of most intracellular proteins. This complex plays numerous essential roles within the cell by associating with different regulatory particles. Associated with two 19S regulatory particles, forms the 26S proteasome and thus participates in the ATP-dependent degradation of ubiquitinated proteins. The 26S proteasome plays a key role in the maintenance of protein homeostasis by removing misfolded or damaged proteins that could impair cellular functions, and by removing proteins whose functions are no longer required. Associated with the PA200 or PA28, the 20S proteasome mediates ubiquitin-independent protein degradation. This type of proteolysis is required in several pathways including spermatogenesis (20S-PA200 complex) or generation of a subset of MHC class I-presented antigenic peptides (20S-PA28 complex).

**Inhibitor · Natural Compounds · Compound Libraries · Recombinant Proteins**

This product is for Research Use Only· Not for Human or Veterinary or Therapeutic Use

Tel:781-999-4286 E\_mail:info@targetmol.com Address:34 Washington Street,Wellesley Hills,MA 02481