

Anti-Kallikrein 3/KLK3 Antibody (4P120)

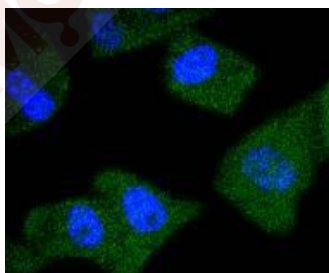
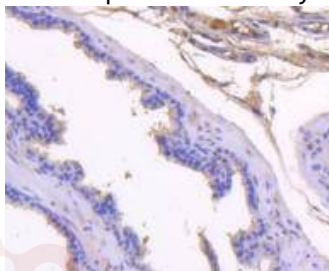
Product Details

Ig Type:	IgG
Reactivity:	Human
Conjugation:	Unconjugated
Molecular Weight:	Theoretical: 34 kDa.
Clone:	4P120
Purification:	ProA affinity purified

Applications

Verified Activity:

1. Immunohistochemical analysis of paraffin-embedded mouse prostate tissue using anti-PSA antibody. Counter stained with hematoxylin.
2. ICC staining PSA in PC-3M cells (green). The nuclear counter stain is DAPI (blue). Cells were fixed in paraformaldehyde, permeabilised with 0.25% Triton X100/PBS.



Application:	ICC/IF,IHC,WB
Recommended	WB: 1:1000; IHC: 1:50-200; ICC/IF: 1:50-200

Properties

Stability & Storage:	Store at -20°C or -80°C for 12 months. Avoid repeated freeze-thaw cycles.
Shipping:	Shipping with blue ice.

Antigen Details

Immunogen: Recombinant Protein
Uniprot ID: P07288
Synonyms: APS;Hk3;kallikrein related peptidase 3;KLK2A1;PSA

Research Background

Prostate specific antigen (PSA), also designated γ -seminoprotein, seminin, p30 antigen, semenogelase, and kallikrein 3 (KLK3), was first identified as a glycoprotein in human seminal plasma. PSA was determined by sequence similarity to be a member of the kallikrein subfamily of trypsin proteases. PSA is a serine protease that hydrolyzes the major human seminal protein, the seminal plasma mobility inhibitor precursor, or semenogelin I (SPMIP or Sgl), which leads to semen liquification. PSA production and expression are highest in normal, benign hyperplastic and cancerous tissues of the prostate, although PSA has also been detected in accessory male sex glands and in breast cancer. PSA has been identified as an aid in the early detection of prostate cancer and is a commonly used tumor marker.

Inhibitor · Natural Compounds · Compound Libraries · Recombinant Proteins

This product is for Research Use Only · Not for Human or Veterinary or Therapeutic Use

Tel:781-999-4286 E_mail:info@targetmol.com Address:34 Washington Street,Wellesley Hills,MA 02481