

Anti-Prohibitin Antibody (1C561)

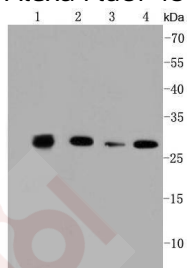
Product Details

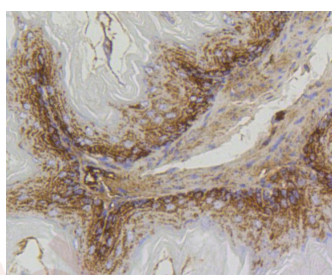
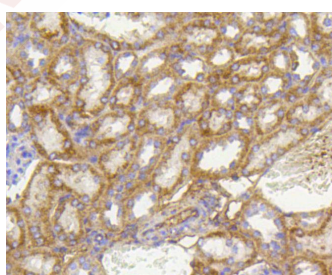
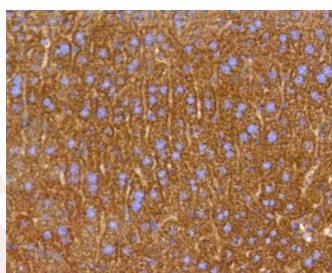
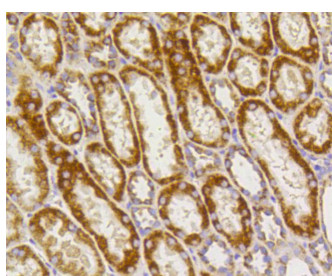
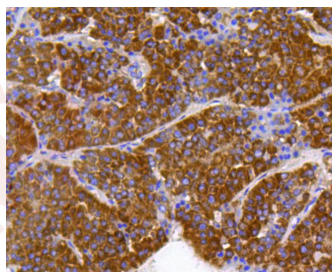
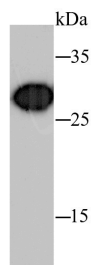
Ig Type:	IgG
Reactivity:	Human,Mouse,Rat,zebrafish
Conjugation:	Unconjugated
Molecular Weight:	Theoretical: 30 kDa.
Clone:	1C561
Purification:	ProA affinity purified

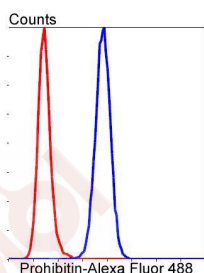
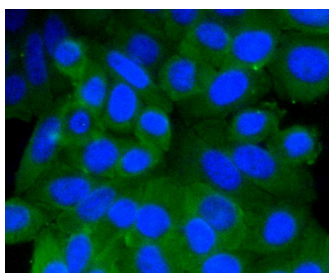
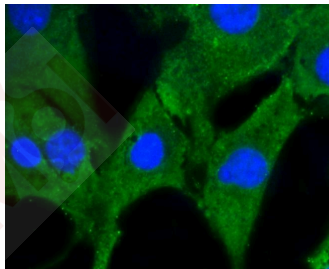
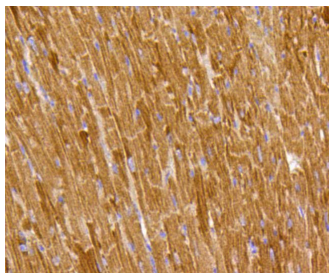
Applications

1. Western blot analysis of Prohibitin on different lysates using anti-Prohibitin antibody at 1/1,000 dilution. Positive control: Lane 1: 293, Lane 2: Jurkat, Lane 3: Mouse kidney, Lane 4: HepG2.
2. Western blot analysis of Prohibitin on hybrid fish (crucian-carp) liver tissue lysate using anti-Prohibitin antibody at 1/500 dilution.
3. Immunohistochemical analysis of paraffin-embedded human liver cancer tissue using anti-Prohibitin antibody. Counter stained with hematoxylin.
4. Immunohistochemical analysis of paraffin-embedded human kidney tissue using anti-Prohibitin antibody. Counter stained with hematoxylin.
5. Immunohistochemical analysis of paraffin-embedded mouse liver tissue using anti-Prohibitin antibody. Counter stained with hematoxylin.
6. Immunohistochemical analysis of paraffin-embedded mouse kidney tissue using anti-Prohibitin antibody. Counter stained with hematoxylin.
7. Immunohistochemical analysis of paraffin-embedded mouse stomach tissue using anti-Prohibitin antibody. Counter stained with hematoxylin.
8. Immunohistochemical analysis of paraffin-embedded mouse heart tissue using anti-Prohibitin antibody. Counter stained with hematoxylin.
9. ICC staining Prohibitin in NIH/3T3 cells (green). The nuclear counter stain is DAPI (blue). Cells were fixed in paraformaldehyde, permeabilised with 0.25% Triton X100/PBS.
10. ICC staining Prohibitin in HepG2 cells (green). The nuclear counter stain is DAPI (blue). Cells were fixed in paraformaldehyde, permeabilised with 0.25% Triton X100/PBS.
11. Flow cytometric analysis of HepG2 cells with Prohibitin antibody at 1/50 dilution (blue) compared with an unlabelled control (cells without incubation with primary antibody; red). Alexa Fluor 488-conjugated goat anti rabbit IgG was used as the seco antibody.

Verified Activity:







Application: FCM, ICC, IHC, IP, WB

Recommended WB: 1:1000-2000; IHC: 1:200-500; ICC: 1:50-200; FCM: 1:50-100

Properties

Stability & Storage: Store at -20°C or -80°C for 12 months. Avoid repeated freeze-thaw cycles.

Shipping: Shipping with blue ice.

Antigen Details

Immunogen: Recombinant Protein

Uniprot ID: P35232

Synonyms: Phb; B-cell receptor-associated protein 32 (BAP 32); Prohibitin 1; Phb1

Research Background

Prohibitin is an evolutionarily conserved protein that has antiproliferative activity. The gene encoding human prohibitin maps to chromosome 17q21 and is ubiquitously expressed. Prohibitin is a post-synthetically modified protein that is localized in the inner membrane of mitochondria, where it regulates the cell cycle by blocking the transition between the G1 and S phases, and on the plasma membrane of B cells, where it mediates B cell maturation. Prohibitin mRNA and protein levels are high in G1, decline during the S phase, rise again in G2 and

A DRUG SCREENING EXPERT

decline in M phase, which suggests that prohibitin controls the cell cycle by using both transcriptional and posttranslational mechanisms. Prohibitin is also a potential tumor suppressor protein that binds to retinoblastoma (Rb) and subsequently inhibits the activity of E2F family members in response to specific signaling cascades. Prohibitin 2 is a repressor of estrogen receptor activity, and is required for somatic and germline differentiation in the larval gonad during embryonic development. Mutations in the Prohibitin genes are correlated with breast cancer development and/or progression in more than 80% of the cell lines analyzed.

Inhibitor · Natural Compounds · Compound Libraries · Recombinant Proteins

This product is for Research Use Only · Not for Human or Veterinary or Therapeutic Use

Tel: 781-999-4286 E_mail: info@targetmol.com Address: 34 Washington Street, Wellesley Hills, MA 02481