

Anti-CASP9 Antibody (8M475)

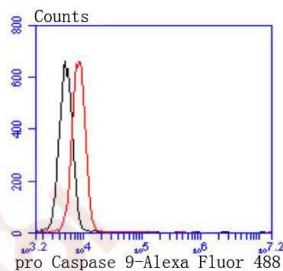
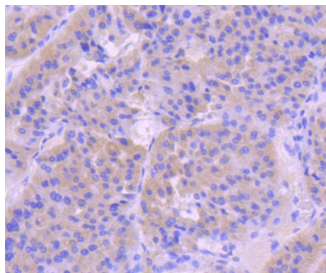
Product Details

Ig Type:	IgG
Reactivity:	Human
Conjugation:	Unconjugated
Molecular Weight:	Theoretical: 46 kDa.
Clone:	8M475
Purification:	ProA affinity purified

Applications

Verified Activity:

1. Western blot analysis of pro Caspase 9 on Hela cells lysates using anti-pro Caspase 9 antibody at 1/1,000 dilution.
2. Immunohistochemical analysis of paraffin-embedded human liver cancer tissue using anti-pro Caspase 9 antibody. Counter stained with hematoxylin.
3. Flow cytometric analysis of Jurkat cells with pro Caspase 9 antibody at 1/50 dilution (red) compared with an unlabelled control (cells without incubation with primary antibody; black). Alexa Fluor 488-conjugated goat anti rabbit IgG was used as the secondary antibody.



Application: FCM,IHC,WB

Recommended WB: 1:1000-2000; IHC: 1:50-200; FCM: 1:10-50

Properties

Stability & Storage: Store at -20°C or -80°C for 12 months. Avoid repeated freeze-thaw cycles.

Shipping: Shipping with blue ice.

Antigen Details

Immunogen: Recombinant Protein

Uniprot ID: P55211

Synonyms: Caspase9;Caspase-9;EC 3.4.22.62;MCH6;Apoptotic protease Mch-6;CASP-9;ICE-LAP6;ICE-like apoptotic protease 6;APAF-3;Apoptotic protease-activating factor 3

Research Background

A unique family of cysteine proteases has been described that differs in sequence, structure and substrate specificity from any previously described protease family. This family, Ced-3/caspase-1, is comprised of caspase-1, caspase-2, caspase-3, caspase-4, caspase-6, caspase-7 (also designated Mch3, ICE-LAP3 or CMH-1), caspase-9 and caspase-10. Ced-3/caspase-1 family members function as key components of the apoptotic machinery and act to destroy specific target proteins which are critical to cellular longevity. Poly(ADP-ribose) polymerase plays an integral role in surveying for DNA mutations and double strand breaks. Caspase-3, caspase-7 and caspase-9, but not caspase-1, have been shown to cleave the nuclear protein PARP into an apoptotic fragment. Caspase-6, but not caspase-3, has been shown to cleave the nuclear lamins, which are critical to maintaining the integrity of the nuclear envelope and cellular morphology. Caspase-10 has been shown to activate caspase-3 and caspase-7 in response to apoptotic stimuli.

Inhibitor · Natural Compounds · Compound Libraries · Recombinant Proteins

This product is for Research Use Only · Not for Human or Veterinary or Therapeutic Use

Tel:781-999-4286 E_mail:info@targetmol.com Address:34 Washington Street,Wellesley Hills,MA 02481
