

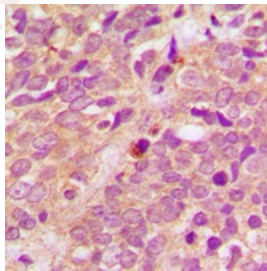
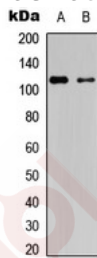
Anti-Phospho-PRKD1/2/3 (Ser738/742) Polyclonal Antibody

Product Details

Ig Type:	IgG
Reactivity:	Human,Mouse,Rat
Conjugation:	Unconjugated
Molecular Weight:	Theoretical: 115 kDa.
Purification:	The antibody was purified by immunogen affinity chromatography.

Applications

- Verified Activity:
1. Western blot analysis of PRKD1/2/3 (phospho-Ser738/S742) expression in HT29, rat astrocytes whole cell lysates.
 2. Immunohistochemical analysis of PRKD1/2/3 (phospho-Ser738/Ser742) staining in human breast cancer formalin fixed paraffin embedded tissue section. The section was then incubated with the antibody at room temperature and detected using an HRP conjugated compact polymer system. DAB was used as the chromogen. The section was then counterstained with haematoxylin and mounted with DPX.



Application:	IHC,WB
Recommended	WB: 1:500-1000; IHC: 1:50-100

Properties

- Stability & Storage: Store at -20°C or -80°C for 12 months. Avoid repeated freeze-thaw cycles.
- Shipping: Shipping with blue ice.

Antigen Details

Immunogen: KLH conjugated synthetic peptide: encompassing a sequence within the C-term region of human PRKD1/2/3

Antigen Species: human

Synonyms: p-PRKD1/2/3 (S738/742);p-PRKD1/2/3 (Ser738/742);PRKD1/2/3 (p-Ser738/742);PRKD1/2/3 (p-S738/742)

Inhibitor · Natural Compounds · Compound Libraries · Recombinant Proteins

This product is for Research Use Only · Not for Human or Veterinary or Therapeutic Use

Tel:781-999-4286 E_mail:info@targetmol.com Address:34 Washington Street,Wellesley Hills,MA 02481