

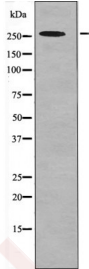
Anti-Phospho-POLR2A (Ser1616) Polyclonal Antibody

Product Details

Ig Type: IgG
Reactivity: Human, Mouse
Conjugation: Unconjugated
Molecular Weight: Theoretical: 270 kDa.
Purification: Antibodies were produced by immunizing rabbits with synthetic phosphopeptide and KLH conjugates. Antibodies were purified by affinity-chromatography using epitope-specific phosphopeptide. Non-phospho specific antibodies were removed by chromatography using non-phosphopeptide.

Applications

Verified Activity: 1. Western blot analysis POLR2A (Phospho-Ser1616) using Forskolin treated 293 whole cell lysates.



Application: WB
Recommended: WB: 1:1000

Properties

Stability & Storage: Store at -20°C or -80°C for 12 months. Avoid repeated freeze-thaw cycles.
Shipping: Shipping with blue ice.

Antigen Details

Immunogen: A synthesized phosphopeptide: human POLR2A around the phosphorylation site of Ser1616
Antigen Species: human
Uniprot ID: P24928
Synonyms: Phospho-POLR2A (S1616); DNA-directed RNA polymerase II largest subunit RNA polymerase II 220 kd subunit; POLR2; RNA-directed RNA polymerase II subunit RPB1; Polr2a; POLR2A (p-Ser1616); Polymerase (RNA) II (DNA directed) polypeptide A 220kDa; RPOL2; hsRPB1; POLRA; hRPB220; RPO2; RPB1; RNA polymerase II subunit B1; POLR2A (p-S1616); RPBh1; DNA directed RNA polymerase II A; DNA-directed RNA polymerase II subunit RPB1; p-POLR2A (S1616); p-POLR2A (Ser1616); RpIILS; DNA-directed RNA polymerase III largest subunit

Inhibitor · Natural Compounds · Compound Libraries · Recombinant Proteins

This product is for Research Use Only · Not for Human or Veterinary or Therapeutic Use

Tel:781-999-4286 E_mail:info@targetmol.com Address:34 Washington Street,Wellesley Hills,MA 02481