

Anti-Podoplanin Antibody (9X102)

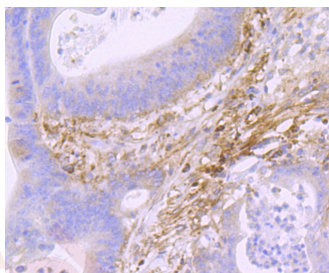
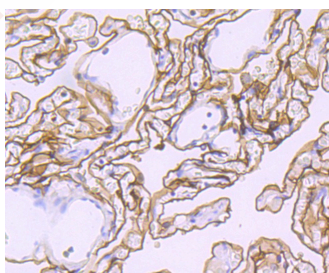
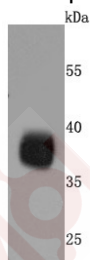
Product Details

Ig Type:	IgG
Reactivity:	Human
Conjugation:	Unconjugated
Molecular Weight:	Theoretical: 36 kDa.
Clone:	9X102
Purification:	ProA affinity purified

Applications

Verified Activity:

1. Western blot analysis of Podoplanin on human lung cells lysates using anti-Podoplanin antibody at 1/500 dilution.
2. Immunohistochemical analysis of paraffin-embedded human lung tissue using anti-Podoplanin antibody. Counter stained with hematoxylin.
3. Immunohistochemical analysis of paraffin-embedded human colon cancer tissue using anti-Podoplanin antibody. Counter stained with hematoxylin.



Application:	IHC,WB
Recommended	WB: 1:2000-5000; IHC: 1:50-200

Properties

Stability & Storage: Store at -20°C or -80°C for 12 months. Avoid repeated freeze-thaw cycles.

Shipping: Shipping with blue ice.

Antigen Details

Immunogen: Recombinant Protein

Uniprot ID: Q86YL7

Synonyms: T1-alpha;PA2.26 antigen;Glycoprotein 36;Aggrus;Podoplanin

Research Background

Puromycin aminonucleoside nephrosis (PAN) is a rat model for human minimal change nephropathy. During PAN, severe proteinuria is induced that is paralleled by a reduced expression of a rat podocyte protein, named podoplanin. Podoplanin, also known as glycoprotein 38 (gp38) is a type I membrane protein. Podoplanin localizes in stromal cells of peripheral lymphoid tissue and thymic epithelial cells. As a regulator of the lymphatic endothelium, podoplanin probably plays a role in maintaining the unique shape of podocytes.

Inhibitor · Natural Compounds · Compound Libraries · Recombinant Proteins

This product is for Research Use Only · Not for Human or Veterinary or Therapeutic Use

Tel:781-999-4286 E_mail:info@targetmol.com Address:34 Washington Street,Wellesley Hills,MA 02481