

Anti-PMP22 Antibody (3X860)

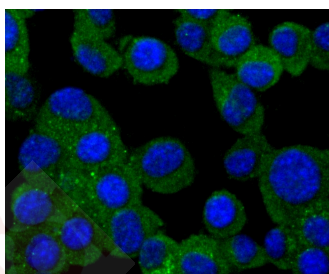
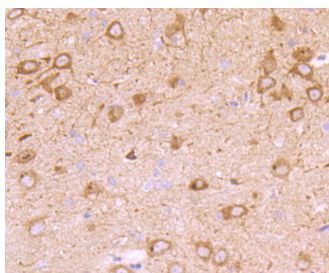
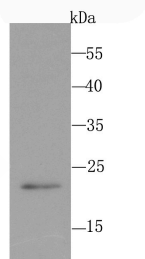
Product Details

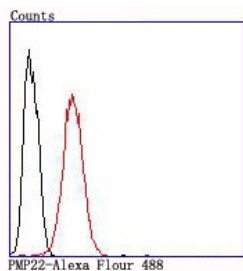
Ig Type:	IgG
Reactivity:	Human,Rat
Conjugation:	Unconjugated
Molecular Weight:	Theoretical: 22 kDa.
Clone:	3X860
Purification:	ProA affinity purified

Applications

Verified Activity:

1. Western blot analysis of PMP22 on PC-12 cell using anti-PMP22 antibody at 1/500 dilution.
2. Immunohistochemical analysis of paraffin-embedded rat brain tissue using anti-PMP22 antibody. Counter stained with hematoxylin.
3. ICC staining PMP22 in N2A cells (green). The nuclear counter stain is DAPI (blue). Cells were fixed in paraformaldehyde, permeabilised with 0.25% Triton X100/PBS.
4. Flow cytometric analysis of SH-SY5Y cells with PMP22 antibody at 1/100 dilution (red) compared with an unlabelled control (cells without incubation with primary antibody; black).





Application: FCM,ICC,IHC,WB

Recommended WB: 1:500; IHC: 1:50-200; ICC: 1:50-200; FCM: 1:50-100

Properties

Stability & Storage: Store at -20°C or -80°C for 12 months. Avoid repeated freeze-thaw cycles.

Shipping: Shipping with blue ice.

Antigen Details

Immunogen: Recombinant Protein

Uniprot ID: Q01453

Synonyms: Cd25;Protein CD25;SR13 myelin protein;Pmp22;PMP-22;Peripheral myelin protein 22;Schwann cell membrane glycoprotein (SAG)

Research Background

PLP (myelin proteolipid protein or lipophilin) is a major constituent of myelin. The two isoforms of the myelin proteolipid protein, PLP and DM20, are very hydrophobic integral membrane proteins that account for about half of the protein content of adult CNS myelin. A mutation in the gene which encodes PLP is linked to Pelizaeus-Merzbacher disease (PMD), a chronic infantile type of diffuse cerebral sclerosis. The gene which encodes PLP maps to human chromosome Xq13-q22. The glycoprotein zero (also designated P-zero or myelin peripheral protein) is the major structural protein of peripheral myelin, accounting for more than 50% of the protein present in the sheath of peri-pheral nerves. Zero is an integral membrane glycoprotein whose expression is restricted to Schwann cells. The gene which encodes zero maps to human chromosome 1q22. PMP22 (peripheral myelin protein 22) is a growth-regulated membrane protein which is expressed by Schwann cells and is localized mainly in compact peripheral nervous system myelin. The gene which encodes PMP22 maps to human chromosome 17p11.2.

Inhibitor · Natural Compounds · Compound Libraries · Recombinant Proteins

This product is for Research Use Only · Not for Human or Veterinary or Therapeutic Use

Tel:781-999-4286 E_mail:info@targetmol.com Address:34 Washington Street,Wellesley Hills,MA 02481