

Anti-PLEKHH1 Antibody (8U514)

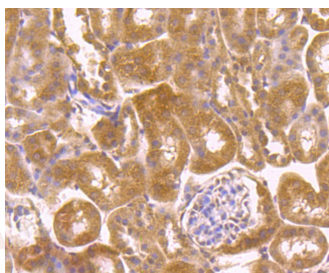
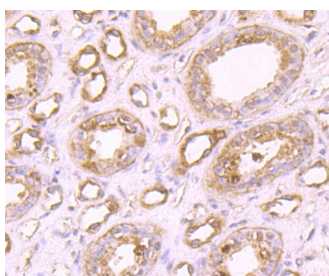
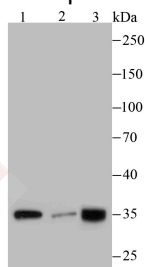
Product Details

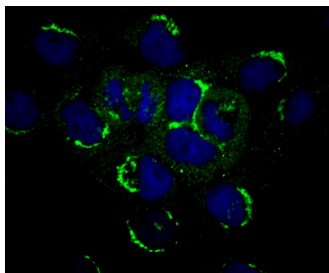
Reactivity:	Human, Mouse
Conjugation:	Unconjugated
Molecular Weight:	Theoretical: 151/30 kDa.
Clone:	8U514
Purification:	ProG affinity purified

Applications

Verified Activity:

1. Western blot analysis of PLEKHH1 on different cell lysates using anti-PLEKHH1 antibody at 1/100 dilution. Positive control: Lane 1: MCF-7, Lane 2: A431, Lane 3: SH-SY5Y.
2. Immunohistochemical analysis of paraffin-embedded human kidney tissue using anti-PLEKHH1 antibody. Counter stained with hematoxylin.
3. Immunohistochemical analysis of paraffin-embedded mouse kidney tissue using anti-PLEKHH1 antibody. Counter stained with hematoxylin.
4. ICC staining PLEKHH1 (green) in A431 cells. The nuclear counter stain is DAPI (blue). Cells were fixed in paraformaldehyde, permeabilised with 0.25% Triton X100/PBS.





Application: ICC,IHC,WB

Recommended WB: 1:500; IHC: 1:50-200; ICC: 1:50

Properties

Stability & Storage: Store at -20°C or -80°C for 12 months. Avoid repeated freeze-thaw cycles.

Shipping: Shipping with blue ice.

Antigen Details

Immunogen: Recombinant Protein

Uniprot ID: Q9ULM0

Synonyms: PLEKHH 1;pleckstrin homology domain-containing family H member 1;KIAA1200;Pleckstrin homology domain containing, family H (with MyTH4 domain) member 1;PH domain containing family H member 1

Research Background

PLEKHH1 (Pleckstrin Homology, MyTH4 And FERM Domain Containing H1) is a Protein Coding gene. Diseases associated with PLEKHH1 include Gestational Trophoblastic Neoplasm. Critical component of the guidance pathway underlying endothelial cell migration and blood vessel patterning. Involved in mediating membrane localization of ephrin proteins, which have been shown to provide guidance cues for endothelial cell migration.

Inhibitor · Natural Compounds · Compound Libraries · Recombinant Proteins

This product is for Research Use Only· Not for Human or Veterinary or Therapeutic Use

Tel:781-999-4286 E_mail:info@targetmol.com Address:34 Washington Street,Wellesley Hills,MA 02481
