

Anti-Plectin Antibody (4J312)

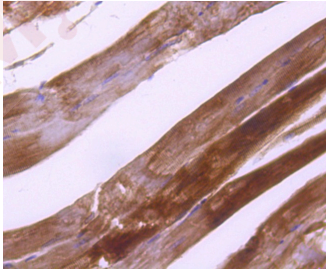
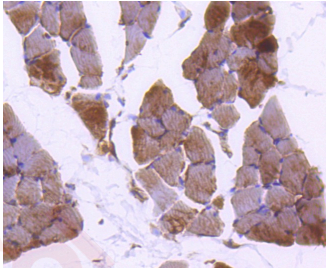
Product Details

Ig Type:	IgG
Reactivity:	Human,Mouse,Rat
Conjugation:	Unconjugated
Molecular Weight:	Theoretical: 531 kDa.
Clone:	4J312
Purification:	ProA affinity purified

Applications

Verified Activity:

1. Immunohistochemical analysis of paraffin-embedded rat skeletal muscle tissue using anti-Plectin antibody. Counter stained with hematoxylin.
2. Immunohistochemical analysis of paraffin-embedded mouse skeletal muscle tissue using anti-Plectin antibody. Counter stained with hematoxylin.



Application:	IHC,IP,WB
Recommended	WB: 1:1000; IHC: 1:100-500

Properties

Stability & Storage:	Store at -20°C or -80°C for 12 months. Avoid repeated freeze-thaw cycles.
Shipping:	Shipping with blue ice.

Antigen Details

Immunogen: Recombinant Protein
Uniprot ID: Q15149
Synonyms: EBS1;PLEC_HUMAN;Plectin 1;PLEC1;PLTN;Plectin 1 intermediate filament binding protein
500kDa;Plectin;EBSO;PCN;Plectin 6;PLEC1b;Hemidesmosomal protein 1;Plectin-1;HD1;pleC

Research Background

Plectin is an abundant cytoskeletal protein that is involved in cytoplasm stabilization. Plectin has been shown to crosslink intermediate filaments to microtubules and microfilaments, and to anchor intermediate filaments to the plasma and nuclear membranes. Plectin binds both Lamin B and vimentin, and this binding is regulated by a variety of protein kinases. Phosphorylation by PKA or PKC results in decreased binding to Lamin B, and phosphorylation by PKA enhances the plectin-vimentin interactions. Plectin is also a substrate for p34cdc2 kinase. Several alternative splice isoforms of plectin are known to exist. Mutations in human plectin are known to cause epidermolysis bullosa simplex with muscular dystrophy (EBS-MD).

Inhibitor · Natural Compounds · Compound Libraries · Recombinant Proteins

This product is for Research Use Only · Not for Human or Veterinary or Therapeutic Use

Tel:781-999-4286 E_mail:info@targetmol.com Address:34 Washington Street,Wellesley Hills,MA 02481