

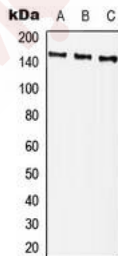
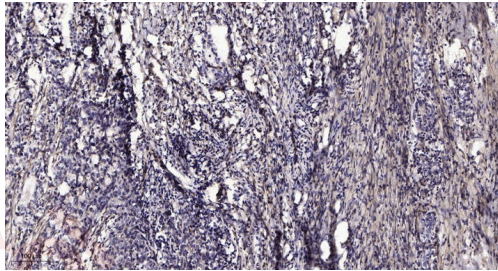
Anti-Phospho-PLC γ 2 (Tyr759) Polyclonal Antibody

Product Details

Ig Type:	IgG
Reactivity:	Human,Mouse
Conjugation:	Unconjugated
Molecular Weight:	Actual: 148 kDa.
Purification:	The antibody was affinity-purified from rabbit serum by affinity-chromatography using specific immunogen.

Applications

- Verified Activity:
1. Immunohistochemical analysis of paraffin-embedded human Gastric adenocarcinoma. 1, Antibody was diluted at 1:200 (4°C overnight). 2, Tris-EDTA, pH9.0 was used for antigen retrieval. 3,Secondary antibody was diluted at 1:200 (room temperature, 45min).
 2. Western blot analysis of PLC gamma 2 (Phospho-Tyr759) expression in Hela (A), NIH3T3 (B), H9C2 (C) whole cell lysates. (Predicted band size: 147 kD; Observed band size: 147 kD).



Application:	WB
Recommended	WB: 1:1000-2000

Properties

- Stability & Storage: Store at -20°C or -80°C for 12 months. Avoid repeated freeze-thaw cycles.
- Shipping: Shipping with blue ice.

Antigen Details

Immunogen: A synthesized phosphopeptide: human PLC γ 2 around the phosphorylation site of Tyr759
Antigen Species: human
Uniprot ID: P16885
Synonyms: PLC γ 2 (p-Y759);p-PLC γ 2 (Tyr759);PLC γ 2 (p-Tyr759);p-PLC γ 2 (Y759)

Research Background

phospholipase C gamma 2(PLCG2) Homo sapiens The protein encoded by this gene is a transmembrane signaling enzyme that catalyzes the conversion of 1-phosphatidyl-1D-myo-inositol 4,5-bisphosphate to 1D-myo-inositol 1,4,5-trisphosphate (IP3) and diacylglycerol (DAG) using calcium as a cofactor. IP3 and DAG are second messenger molecules important for transmitting signals from growth factor receptors and immune system receptors across the cell membrane. Mutations in this gene have been found in autoinflammation, antibody deficiency, and immune dysregulation syndrome and familial cold autoinflammatory syndrome 3. [provided by RefSeq, Mar 2014],

Inhibitor · Natural Compounds · Compound Libraries · Recombinant Proteins

This product is for Research Use Only · Not for Human or Veterinary or Therapeutic Use

Tel:781-999-4286 E_mail:info@targetmol.com Address:34 Washington Street,Wellesley Hills,MA 02481