

Anti-Phospho-PLC $\gamma$ 1 (Tyr783) Polyclonal Antibody

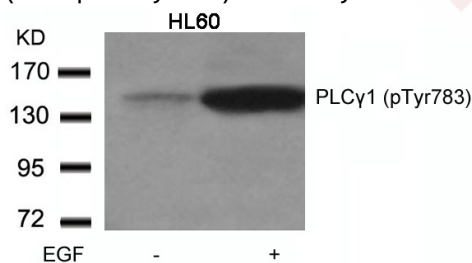
## Product Details

Ig Type:	IgG
Reactivity:	Human,Mouse,Rat
Conjugation:	Unconjugated
Purification:	Antibodies were produced by immunizing rabbits with synthetic phosphopeptide and KLH conjugates. Antibodies were purified by affinity-chromatography using epitope-specific phosphopeptide. Non-phospho specific antibodies were removed by chromatography using non-phosphopeptide.

## Applications

## Verified Activity:

1. Western blot analysis of extracts from HL60 cells untreated or treated with EGF using PLC $\gamma$ 1 (Phospho-Tyr783) Antibody TMAC-03374.



Application: WB

## Properties

Stability & Storage:	Store at 2°C-8°C for 1 month. Store at -20°C or -80°C for 12 months. Avoid repeated freeze-thaw cycles.
Shipping:	Shipping with blue ice.

## Antigen Details

Immunogen:	Peptide sequence around phosphorylation site of tyrosine 783 (G-F-Y(p)-V-E) derived from Human PLCG1
Antigen Species:	human
Uniprot ID:	P19174
Synonyms:	PLC $\gamma$ 1 (p-Y783);PLCgamma1;PLC148;PLC $\gamma$ 1;PLC $\gamma$ 1 (p-Tyr783);PLC gamma1;Phospho-PLC $\gamma$ 1 (Y783);PLC $\gamma$ 1;p-PLC $\gamma$ 1 (Y783);PLC $\gamma$ 1;PLC gamma 1;PLC $\gamma$ 1;NCKAP3;PLC $\gamma$ 1;IDAA;PLC-II;PLC1;p-PLC $\gamma$ 1 (Tyr783)

## Research Background

PLC-gamma is a major substrate for heparin-binding growth factor 1 (acidic fibroblast growth factor)-activated tyrosine kinase.

**Inhibitor · Natural Compounds · Compound Libraries · Recombinant Proteins**

This product is for Research Use Only. Not for Human or Veterinary or Therapeutic Use

Tel:781-999-4286 E\_mail:info@targetmol.com Address:34 Washington Street,Wellesley Hills,MA 02481