

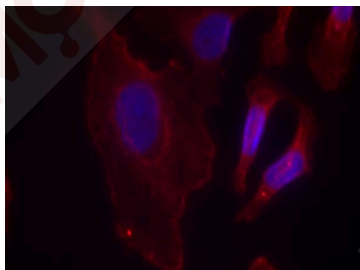
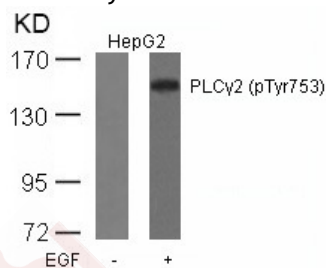
Anti-Phospho-PLC γ 2 (Tyr753) Polyclonal Antibody

Product Details

| | |
|---------------|--|
| Ig Type: | IgG |
| Reactivity: | Human,Mouse,Rat |
| Conjugation: | Unconjugated |
| Purification: | Antibodies were produced by immunizing rabbits with synthetic phosphopeptide and KLH conjugates. Antibodies were purified by affinity-chromatography using epitope-specific phosphopeptide. Non-phospho specific antibodies were removed by chromatography using non-phosphopeptide. |

Applications

- Verified Activity:
- Western blot analysis of extracts from HepG2 cells untreated or treated with EGF using PLC γ 2 (Phospho-Tyr753) Antibody TMAC-03373.
 - Immunofluorescence staining of methanol-fixed Hela cells using PLC γ 2 (Phospho-Tyr753) Antibody TMAC-03373.



Application: IF, WB

Properties

| | |
|----------------------|---|
| Stability & Storage: | Store at 2°C-8°C for 1 month. Store at -20°C or -80°C for 12 months. Avoid repeated freeze-thaw cycles. |
| Shipping: | Shipping with blue ice. |

Antigen Details

Immunogen: Peptide sequence around phosphorylation site of tyrosine 753 (S-L-Y(p)-D-V) derived from Human PLCg2

Antigen Species: human

Uniprot ID: P16885

Synonyms: PLCg2 (p-Tyr753);PLCg2 (p-Y753);p-PLCg2 (Tyr753);p-PLCg2 (Y753)

Research Background

The production of the second messenger molecules diacylglycerol. (DAG) and inositol 1,4,5-trisphosphate (IP3) is mediated by activated phosphatidylinositol-specific phospholipase C enzymes. It is a crucial enzyme in transmembrane signaling.

Inhibitor · Natural Compounds · Compound Libraries · Recombinant Proteins

This product is for Research Use Only· Not for Human or Veterinary or Therapeutic Use

Tel:781-999-4286 E_mail:info@targetmol.com Address:34 Washington Street,Wellesley Hills,MA 02481