

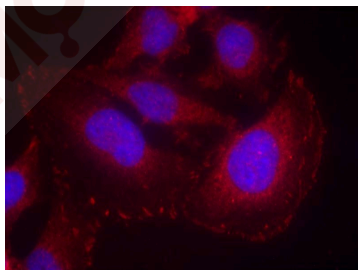
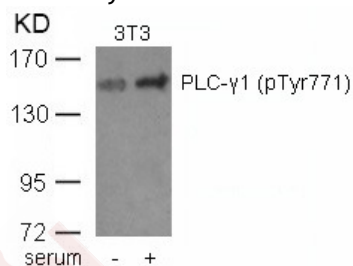
Anti-Phospho-PLC γ 1 (Tyr771) Polyclonal Antibody

Product Details

Ig Type:	IgG
Reactivity:	Human,Mouse,Rat
Conjugation:	Unconjugated
Purification:	Antibodies were produced by immunizing rabbits with synthetic phosphopeptide and KLH conjugates. Antibodies were purified by affinity-chromatography using epitope-specific phosphopeptide. Non-phospho specific antibodies were removed by chromatography using non-phosphopeptide.

Applications

- Verified Activity:
- Western blot analysis of extracts from 3T3 cells untreated or treated with serum using PLC-g1 (phospho-Tyr771) Antibody TMAC-03371.
 - Immunofluorescence staining of methanol-fixed Hela cells using PLC-g1 (phospho-Tyr771) Antibody TMAC-03371.



Application: IF, WB

Properties

Stability & Storage:	Store at 2°C-8°C for 1 month. Store at -20°C or -80°C for 12 months. Avoid repeated freeze-thaw cycles.
Shipping:	Shipping with blue ice.

Antigen Details

Immunogen:	Peptide sequence around phosphorylation site of tyrosine 771 (P-D-Y(p)-G-A) derived from Human PLC-g1
Antigen Species:	human
Uniprot ID:	P19174
Synonyms:	PLCy1 (p-Tyr771);PLC-II;Phospho-PLCy1 (Y771);PLCy1 (p-Y771);PLC y1;PLC γ1;PLC γ 1;p-PLCy1 (Tyr771);PLC gamma 1;NCKAP3;IDAA;PLC y 1;PLCy1;PLC gamma1;PLC1;PLC148;PLCgamma1;p-PLCy1 (Y771)

Research Background

PLC-gamma is a major substrate for heparin-binding growth factor 1 (acidic fibroblast growth factor)-activated tyrosine kinase.

Inhibitor · Natural Compounds · Compound Libraries · Recombinant Proteins

This product is for Research Use Only· Not for Human or Veterinary or Therapeutic Use

Tel:781-999-4286 E_mail:info@targetmol.com Address:34 Washington Street,Wellesley Hills,MA 02481