

Anti-PLCy1 Antibody (8G514)

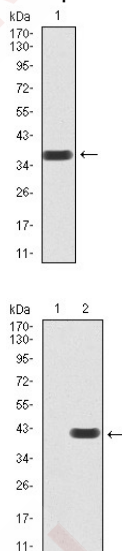
Product Details

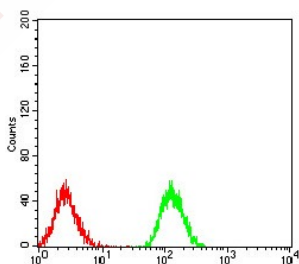
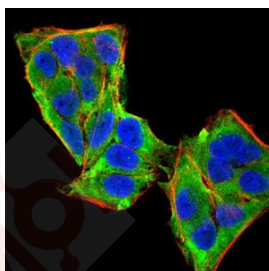
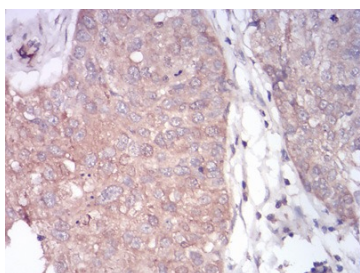
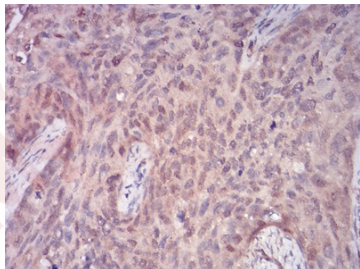
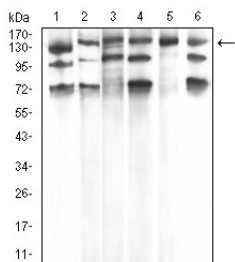
Reactivity:	Human,Mouse,Rat
Conjugation:	Unconjugated
Molecular Weight:	Theoretical: 148 kDa.
Clone:	8G514
Purification:	ProA affinity purified

Applications

1. Western blot analysis of PLCG1 on human PLCG1 recombinant protein using anti-PLCG1 antibody at 1/1,000 dilution.
2. Western blot analysis of PLCG1 on HEK293 (1) and PLCG1-hlgGfc transfected HEK293 (2) cell lysate using anti-PLCG1 antibody at 1/1,000 dilution.
3. Western blot analysis of PLCG1 on different cell lysate using anti-PLCG1 antibody at 1/1,000 dilution. Positive control: Line1: Hela, Line2: A431, Line3: C6, Line4: NIH/3T3, Line5: COS7, Line6: HCT116.
4. Immunohistochemical analysis of paraffin-embedded human cervical cancer tissues using anti-PLCG1 antibody. Counter stained with hematoxylin.
5. Immunohistochemical analysis of paraffin-embedded human bladder cancer tissues using anti-PLCG1 antibody. Counter stained with hematoxylin.
6. ICC staining PLCG1 (green) and Actin filaments (red) in Hela cells. The nuclear counter stain is DAPI (blue). Cells were fixed in paraformaldehyde, permeabilised with 0.25% Triton X100/PBS.
7. Flow cytometric analysis of Jurkat cells with PLCG1 antibody at 1/100 dilution (green) compared with an unlabelled control (cells without incubation with primary antibody; red).

Verified Activity:





Application: FCM, ICC, IHC, WB

Recommended WB: 1:500-2000; IHC: 1:50-200; ICC: 1:50-200; FCM: 1:100-200

Properties

Stability & Storage: Store at -20°C or -80°C for 12 months. Avoid repeated freeze-thaw cycles.

Shipping: Shipping with blue ice.

Antigen Details

Immunogen:	Recombinant Protein
Uniprot ID:	P19174
Synonyms:	PLCy1;PLC γ 1;PLC γ 1;PLC gamma1;PLCgamma1;PLC148;NCKAP3;PLC1;IDAA;PLC gamma 1;PLC γ 1;PLC-II;PLC γ 1

Research Background

Phospholipase C-gamma 1 (PLC g1) is an isozyme of the phosphoinositide-specific PLC family, which occupies a central role in hormonal signal transduction pathways and is a substrate for the epidermal growth factor receptor tyrosine kinase. Following activation of TrkB, PLC g1 is phosphorylated on Tyrosine 783, Tyrosine 771 and Tyrosine 1253. Tyrosine 783 lies just downstream of the kinase domain in a relatively short sequence motif characteristic of the Trk family of protein-tyrosine kinase receptors. The sequence around Tyrosine 783 fits a consensus sequence for binding PLC g1. PLC g1 also forms a complex with TrkB consistent with the possibility that one of the TrkB autophosphorylation sites provides a binding site for the PLC g1 SH2 domains, as is the case for other receptor protein-tyrosine kinases.

Inhibitor · Natural Compounds · Compound Libraries · Recombinant Proteins

This product is for Research Use Only · Not for Human or Veterinary or Therapeutic Use

Tel:781-999-4286 E_mail:info@targetmol.com Address:34 Washington Street,Wellesley Hills,MA 02481