

Anti-Phospho-EIF2AK2 (Thr446) Polyclonal Antibody

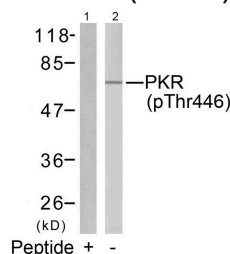
Product Details

Ig Type:	IgG
Reactivity:	Human
Conjugation:	Unconjugated
Purification:	Antibodies were produced by immunizing rabbits with synthetic phosphopeptide and KLH conjugates. Antibodies were purified by affinity-chromatography using epitope-specific phosphopeptide. Non-phospho specific antibodies were removed by chromatography using non-phosphopeptide.

Applications

Verified Activity:

1. Western blot analysis of extracts from K562 cells using PKR (Phospho-Thr446) Antibody TMAC-03358 (Lane 2) and the same antibody preincubated with blocking peptide (Lane1).



Application: WB

Properties

Stability & Storage: Store at 2°C-8°C for 1 month. Store at -20°C or -80°C for 12 months. Avoid repeated freeze-thaw cycles.

Shipping: Shipping with blue ice.

Antigen Details

Immunogen: Peptide sequence around phosphorylation site of threonine 446 (K-R-T(p)-R-S) derived from Human PKR

Antigen Species: human

Uniprot ID: P19525

Synonyms: EIF2AK2 (p-Thr446); p68 kinase; EIF2AK2 (pT446); EIF2AK2 (p-T446); eIF2A protein kinase2; EIF2AK2 (phospho-Thr446)

Research Background

Following activation by double-stranded RNA in the presence of ATP, the kinase becomes autophosphorylated and can catalyze the phosphorylation of the translation initiation factor EIF2S1, which leads to an inhibition of the initiation of protein synthesis. Double-stranded RNA is generated during the course of a viral infection.

Inhibitor · Natural Compounds · Compound Libraries · Recombinant Proteins

This product is for Research Use Only. Not for Human or Veterinary or Therapeutic Use

Tel: 781-999-4286 E_mail: info@targetmol.com Address: 34 Washington Street, Wellesley Hills, MA 02481