

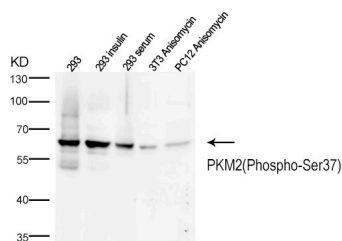
## Anti-Phospho-PKM (Ser37) Polyclonal Antibody 2

## Product Details

Ig Type:	IgG
Reactivity:	Human,Mouse
Conjugation:	Unconjugated
Molecular Weight:	Theoretical: 58 kDa.
Purification:	Affinity purification using immunogen.

## Applications

Verified Activity: 1. Western blot analysis of extracts of various cell lines, using PKM2(Phospho-Ser37).



Application:	WB
Recommended	WB: 1:1000-3000

## Properties

Stability & Storage:	Store at -20°C or -80°C for 12 months. Avoid repeated freeze-thaw cycles.
Shipping:	Shipping with blue ice.

## Antigen Details

Immunogen:	A synthesized phosphopeptide: human PKM2 around the phosphorylation site of Ser37
Antigen Species:	human
Uniprot ID:	P14618
Synonyms:	pyruvate kinase, muscle;CTHBP;PKM2 (p-Ser37);p-PKM2 (Ser37);PKM2;THBP1;PK3;HEL-S-30;TCB;OIP3;PKM2 (p-S37);p-PKM2 (S37)

**Inhibitor · Natural Compounds · Compound Libraries · Recombinant Proteins**

This product is for Research Use Only. Not for Human or Veterinary or Therapeutic Use

Tel:781-999-4286 E\_mail:info@targetmol.com Address:34 Washington Street,Wellesley Hills,MA 02481