

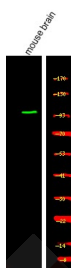
Anti-Phospho-PKG2 (Ser126) Polyclonal Antibody

Product Details

| | |
|-------------------|--|
| Ig Type: | IgG |
| Reactivity: | Human,Mouse,Rat |
| Conjugation: | Unconjugated |
| Molecular Weight: | Theoretical: 87 kDa. |
| Purification: | Antibodies were produced by immunizing rabbits with synthetic phosphopeptide and KLH conjugates. Antibodies were purified by affinity-chromatography using epitope-specific phosphopeptide. Non-phospho specific antibodies were removed by chromatography using non-phosphopeptide. |

Applications

Verified Activity: 1. Western Blot analysis of lysates of mouse brain, using primary antibody at 1:1000 dilution.



Application: WB
Recommended WB: 1:1000

Properties

Stability & Storage: Store at -20°C or -80°C for 12 months. Avoid repeated freeze-thaw cycles.
Shipping: Shipping with blue ice.

Antigen Details

Immunogen: A synthesized phosphopeptide: human PKG2 around the phosphorylation site of Ser126
Antigen Species: human
Uniprot ID: Q13237
Synonyms: PKG2 (p-Ser126);PKG2 (p-S126);p-PKG2 (Ser126);p-PKG2 (S126)

Inhibitor · Natural Compounds · Compound Libraries · Recombinant Proteins

This product is for Research Use Only. Not for Human or Veterinary or Therapeutic Use

Tel:781-999-4286 E_mail:info@targetmol.com Address:34 Washington Street,Wellesley Hills,MA 02481