

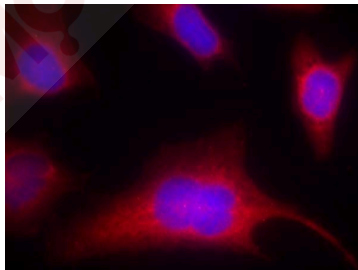
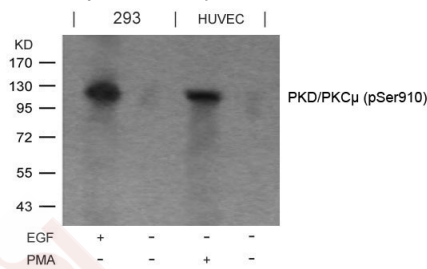
Anti-Phospho-PKD/PKC μ (Ser910) Polyclonal Antibody 2

Product Details

Ig Type:	IgG
Reactivity:	Human
Conjugation:	Unconjugated
Purification:	Antibodies were produced by immunizing rabbits with synthetic phosphopeptide and KLH conjugates. Antibodies were purified by affinity-chromatography using epitope-specific phosphopeptide. Non-phospho specific antibodies were removed by chromatography using non-phosphopeptide.

Applications

- Verified Activity:
- Western blot analysis of extracts from EGF-treated 293 and PMA-treated HUVEC cells using PKD/PKC μ (Phospho-Ser910) Antibody TMAC-03341.
 - Immunofluorescence staining of methanol-fixed Hela cells using PKD/PKC μ (Phospho-Ser910) Antibody TMAC-03341.



Application: IF, WB

Properties

Stability & Storage: Store at -20°C or -80°C for 12 months. Avoid repeated freeze-thaw cycles.

Shipping: Shipping with blue ice.

Antigen Details

Immunogen:	Peptide sequence around phosphorylation site of serine 910 (R-V-S(p)-I-L) derived from Human PKD/PKCm
Antigen Species:	human
Uniprot ID:	Q15139
Synonyms:	PKD/PKCm (p-S910);p-PKD/PKCm (S910);PKD/PKCm (p-Ser910);p-PKD/PKCm (Ser910)

Research Background

Converts transient diacylglycerol. (DAG) signals into prolonged physiological effects, downstream of PKC. Involved in resistance to oxidative stress through activation of NF-kappa-B.

Inhibitor · Natural Compounds · Compound Libraries · Recombinant Proteins

This product is for Research Use Only· Not for Human or Veterinary or Therapeutic Use

Tel:781-999-4286 E_mail:info@targetmol.com Address:34 Washington Street,Wellesley Hills,MA 02481