

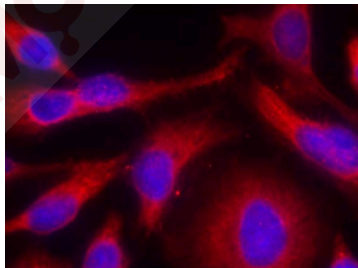
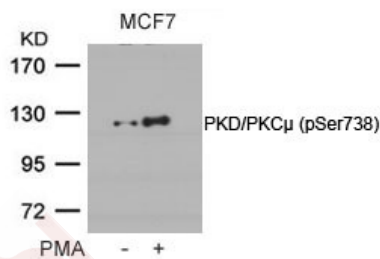
Anti-Phospho-PKD/PKC μ (Ser738) Polyclonal Antibody

Product Details

| | |
|---------------|--|
| Ig Type: | IgG |
| Reactivity: | Human,Mouse,Rat |
| Conjugation: | Unconjugated |
| Purification: | Antibodies were produced by immunizing rabbits with synthetic phosphopeptide and KLH conjugates. Antibodies were purified by affinity-chromatography using epitope-specific phosphopeptide. Non-phospho specific antibodies were removed by chromatography using non-phosphopeptide. |

Applications

| | |
|--------------------|---|
| Verified Activity: | <ol style="list-style-type: none">Western blot analysis of extracts from MCF cells untreated or treated with PMA using PKD/PKCμ (Phospho-Ser738) Antibody TMAC-03340.Immunofluorescence staining of methanol-fixed Hela cells using PKD/PKCμ (Phospho-Ser738) Antibody TMAC-03340. |
|--------------------|---|



| | |
|--------------|-------|
| Application: | IF,WB |
|--------------|-------|

Properties

| | |
|----------------------|---|
| Stability & Storage: | Store at -20°C or -80°C for 12 months. Avoid repeated freeze-thaw cycles. |
| Shipping: | Shipping with blue ice. |

Antigen Details

Immunogen: Peptide sequence around phosphorylation site of serine 738 (E-K-S(p)-F-R) derived from Human PKD/PKCm

Antigen Species: human

Uniprot ID: Q15139

Synonyms: p-PKD/PKCm (S738);PKD/PKCm (p-S738);PKD/PKCm (p-Ser738);p-PKD/PKCm (Ser738)

Research Background

Converts transient diacylglycerol. (DAG) signals into prolonged physiological effects, downstream of PKC. Involved in resistance to oxidative stress through activation of NF-kappa-B.

Inhibitor · Natural Compounds · Compound Libraries · Recombinant Proteins

This product is for Research Use Only· Not for Human or Veterinary or Therapeutic Use

Tel:781-999-4286 E_mail:info@targetmol.com Address:34 Washington Street,Wellesley Hills,MA 02481