

## Anti-Phospho-PRKCQ (Ser676) Polyclonal Antibody

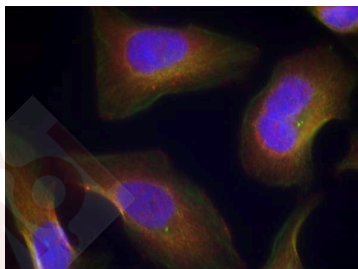
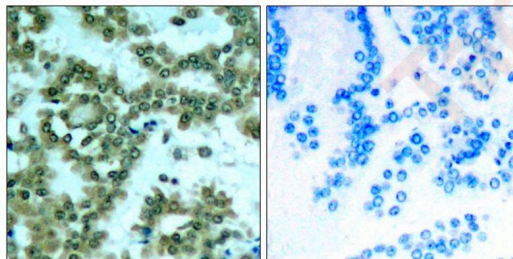
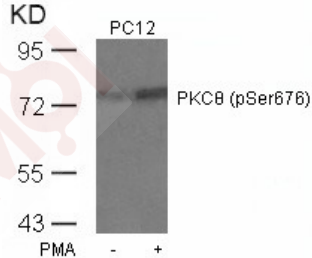
### Product Details

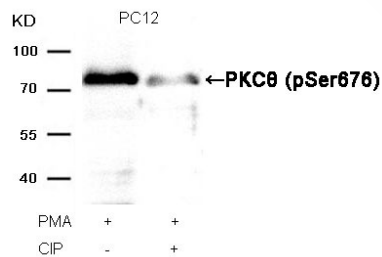
Ig Type:	IgG
Reactivity:	Human,Mouse,Rat
Conjugation:	Unconjugated
Purification:	Antibodies were produced by immunizing rabbits with synthetic phosphopeptide and KLH conjugates. Antibodies were purified by affinity-chromatography using epitope-specific phosphopeptide. Non-phospho specific antibodies were removed by chromatography using non-phosphopeptide.

### Applications

#### Verified Activity:

1. Western blot analysis of extracts from PC12 cells untreated or treated with PMA using PKC $\theta$  (Phospho-Ser676) Antibody TMAC-03334.
2. Immunohistochemical analysis of paraffin-embedded human lung carcinoma tissue using PKC $\theta$  (Phospho-Ser676) Antibody TMAC-03334 (left) or the same antibody preincubated with blocking peptide (right).
3. Immunofluorescence staining of methanol-fixed Hela cells using PKC $\theta$  (Phospho-Ser676) Antibody TMAC-03334.
4. Western blot analysis of extracts from PC12 cells, treated with PMA or calf intestinal phosphatase (CIP), using PKC $\theta$  (Phospho-Ser676) Antibody TMAC-03334.





Application: IF,IHC,WB

### Properties

Stability & Storage: Store at 2°C-8°C for 1 month. Store at -20°C or -80°C for 12 months. Avoid repeated freeze-thaw cycles.

Shipping: Shipping with blue ice.

### Antigen Details

Immunogen: Peptide sequence around phosphorylation site of serine 676 (R-L-S(p)-F-A) derived from Human PKC $\theta$

Antigen Species: human

Uniprot ID: Q04759

Synonyms: PRKCQ (p-Ser676);p-PRKCQ (S676);p-PRKCQ (Ser676);PRKCQ (p-S676)

### Research Background

This is a calcium-independent, phospholipid-dependent, serine- and threonine-specific enzyme. Essential for T-cell receptor (TCR)-mediated T-cell activation, but is dispensable during TCR-dependent thymocyte development. Links the TCR signaling complex to the activation of NF-kappa-B in mature T lymphocytes. Required for interleukin-2 (IL2) production.

**Inhibitor · Natural Compounds · Compound Libraries · Recombinant Proteins**

This product is for Research Use Only · Not for Human or Veterinary or Therapeutic Use

Tel:781-999-4286 E\_mail:info@targetmol.com Address:34 Washington Street,Wellesley Hills,MA 02481